

SUMMARY

Nina™

Naturally Intuitive Naturally Attractive

Instructions

WELCOME PAGE	2
1. SAFETY	3
2. NINA IO REMOTE CONTROL	5
3. USE NINA IO	13
Control an item of equipment	13
My function	15
Natural Control function	19
Load a scenario	22
Alarm function	23
4. CUSTOMIZE NINA IO	25
Customize equipment	25
Customize groups	29
Customize scenarios	35
Customize remote control	40
5. ADVANCED SETTINGS	46
6. TROUBLESHOOTING	57
7. ABOUT NINA IO	58



SUMMARY

WELCOME PAGE	2
1. SAFETY	3
2. NINA IO REMOTE CONTROL	5
3. USE NINA IO	13
Control an item of equipment	13
My function	15
Natural Control function	19
Load a scenario	22
Alarm function	23
4. CUSTOMIZE NINA IO	25
Customize equipment	25
Customize groups	29
Customize scenarios	35
Customize remote control	40
5. ADVANCED SETTINGS	46
6. TROUBLESHOOTING	57
7. ABOUT NINA IO	58

WELCOME PAGE

Move according to your intuition, manage without thinking, focus on essentials...

Nina io, a new personalized remote control with a touch screen that facilitates intuitive interaction, gives off new sensations and lets your desires guide you. Naturally.

Naturally intuitive

Like a natural extension of your hand...

With a simple touch of the screen you can select, control, integrate, memorise, and position all of the equipment in your home.

- Control equipment individually or as a group
- Configure to suit your house
- Precise control
- Creation of scenarios

Exclusive function of Somfy: Natural Control

Once you've set up the interface, pressing the screen for just 2 seconds is enough to control any piece of equipment.

With one simple gesture...like magic.

Naturally attractive

In perfect harmony with your aesthetics

A sleek and sensual object. With ergonomic curves and a soft touch. A designer accessory that perfectly blends into your environment.

Even the finishing touches can be personalized: choose from 5 different materials for the case, in chic and elegant shades.

Clearly adaptable

Nina io, evolving to meet your need

Blinds, shutters, garage door, gate, lights, alarm, Velux, pergola...Nina io recognizes and helps you adjust and control all of your equipment, to provide ultimate comfort in your home.

Nina io uses io-homecontrol® technology for enhanced ease and performance.

SUMMARY

WELCOME PAGE	2
1. SAFETY	3
2. NINA IO REMOTE CONTROL	5
3. USE NINA IO	13
Control an item of equipment	13
My function	15
Natural Control function	19
Load a scenario	22
Alarm function	23
4. CUSTOMIZE NINA IO	25
Customize equipment	25
Customize groups	29
Customize scenarios	35
Customize remote control	40
5. ADVANCED SETTINGS	46
6. TROUBLESHOOTING	57
7. ABOUT NINA IO	58

1. SAFETY

Read the quick start guide and the safety instructions provided with product carefully before installation and use. These instructions must be retained by the user.

Failure to follow these instructions or the use of the product outside its field of application is forbidden, and will invalidate the warranty and discharge Somfy of all liability.

This Somfy product must be installed by a professional motorisation and home automation installer, for whom this guide is intended. Moreover, the installer must comply with current standards and legislation in the country in which the product is being installed, and inform his customers of the operating and maintenance conditions for the product.

Never begin installing without first checking the compatibility of this product with the associated equipment and accessories. If in doubt when installing this product and/or to obtain additional information, contact Somfy adviser or go to the website www.somfy.com.

General safety instructions

- Do not use or install this product outdoors.
- Keep the product out of reach of children.
- Do not use abrasive products or solvents to clean it. Use a soft, dry cloth to clean its surface.
- Do not knock or drop the product, expose it to flammable materials or sources of heat or moisture, or splash or immerse it.
- Do not attempt to repair it.

Electrical safety instructions

Charger:

- Only use the mains adapter provided with the product to connect the charger.
- The mains adapter must be connected to an electrical system in good condition and compliant with applicable standards.
- Make sure the power supply voltage and frequency indicated on the mains adapter data plate match those of your electrical installation.
- Unwind the electric cable fully before connecting it to the socket in order to avoid overheating.
- Always hold the adapter unit when connecting and disconnecting the mains adapter. Never pull on the cables.

SUMMARY

WELCOME PAGE	2
1. SAFETY	3
2. NINA IO REMOTE CONTROL	5
3. USE NINA IO	13
Control an item of equipment	13
My function	15
Natural Control function	19
Load a scenario	22
Alarm function	23
4. CUSTOMIZE NINA IO	25
Customize equipment	25
Customize groups	29
Customize scenarios	35
Customize remote control	40
5. ADVANCED SETTINGS	46
6. TROUBLESHOOTING	57
7. ABOUT NINA IO	58

- Never touch the mains adapter with damp or wet hands, as this could cause electrocution.
- The mains adapter and its cable must be kept out of the reach of children and away from pets, while remaining accessible so that it can be disconnected quickly in case of emergency.

Remote control:

- Only use the battery provided with the product to power the remote control.
- When it needs replacing, contact your professional motorisation and home automation installer, use the battery recommended by Somfy. Risk of explosion if a non-compliant battery is used.
- To recycle, ensure the battery is separated from other types of waste and recycled via your local recycling centre

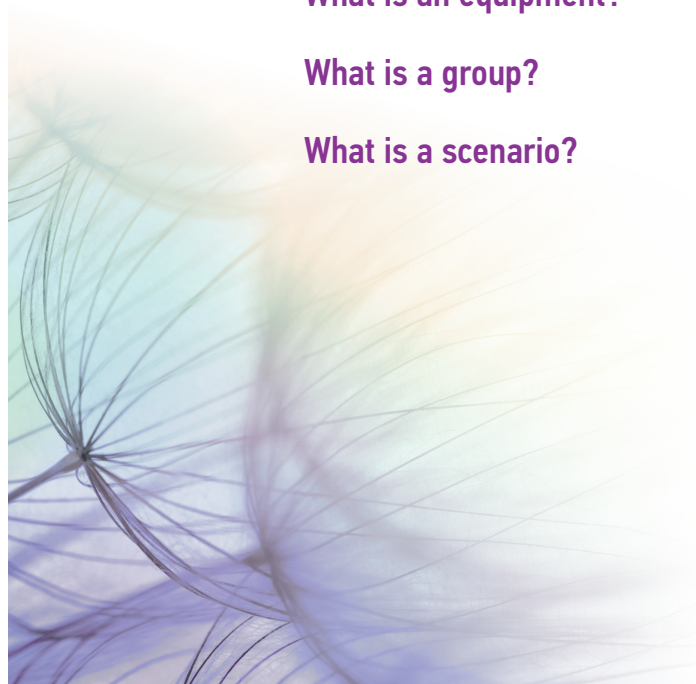


SUMMARY

WELCOME PAGE	2
1. SAFETY	3
2. NINA IO REMOTE CONTROL	5
3. USE NINA IO	13
Control an item of equipment	13
My function	15
Natural Control function	19
Load a scenario	22
Alarm function	23
4. CUSTOMIZE NINA IO	25
Customize equipment	25
Customize groups	29
Customize scenarios	35
Customize remote control	40
5. ADVANCED SETTINGS	46
6. TROUBLESHOOTING	57
7. ABOUT NINA IO	58

2. NINA IO REMOTE CONTROL

Content of the package	6
Nina io remote control	7
Nina io navigation	8
Nina io charger	8
Nina io battery	9
What is an equipment?	10
What is a group?	11
What is a scenario?	12



SUMMARY

WELCOME PAGE	2
1. SAFETY	3
2. NINA IO REMOTE CONTROL	5
3. USE NINA IO	13
Control an item of equipment	13
My function	15
Natural Control function	19
Load a scenario	22
Alarm function	23
4. CUSTOMIZE NINA IO	25
Customize equipment	25
Customize groups	29
Customize scenarios	35
Customize remote control	40
5. ADVANCED SETTINGS	46
6. TROUBLESHOOTING	57
7. ABOUT NINA IO	58

Content of the package

Discover the different elements and documents provided in the packaging:



NINA IO REMOTE CONTROL

Touch-screen remote control (including battery)



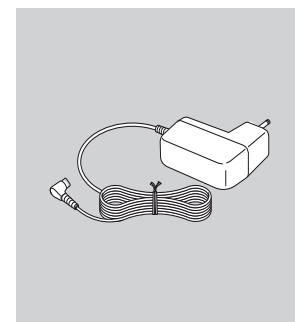
BACK FACE OF CUSTOMIZATION

Removable back face to personalize Nina io



BASE

Holder of Nina io remote control



REMOTE CONTROL CHARGER

Power cable to charge Nina io remote control



QUICK START GUIDE

Guide to get started with the product



IMPORTANT SAFETY INSTRUCTIONS

Read safety instructions carefully before installation and use. These instructions must be retained by the user.

SUMMARY

WELCOME PAGE	2
1. SAFETY	3
2. NINA IO REMOTE CONTROL	5
3. USE NINA IO	13
Control an item of equipment	13
My function	15
Natural Control function	19
Load a scenario	22
Alarm function	23
4. CUSTOMIZE NINA IO	25
Customize equipment	25
Customize groups	29
Customize scenarios	35
Customize remote control	40
5. ADVANCED SETTINGS	46
6. TROUBLESHOOTING	57
7. ABOUT NINA IO	58

Nina io remote control

The home screen of Nina io remote control is composed of the following elements:

EQUIPMENT

ACCESS TO EQUIPMENT MANAGEMENT

List of equipment to manage them one by one

GROUPS

ACCESS TO GROUPS MANAGEMENT

List of groups to manage equipment by groups, by launching scenarios

CASES

COLLECTION OF CASES

Available cases (leather or colored soft touch) to personalize Nina io



BATTERY LEVEL INDICATOR

NATURAL CONTROL

ACCESS TO NATURAL CONTROL FUNCTION

Area to launch actions by Up/Down movements

SETTINGS

ACCESS TO SETTING MENUS

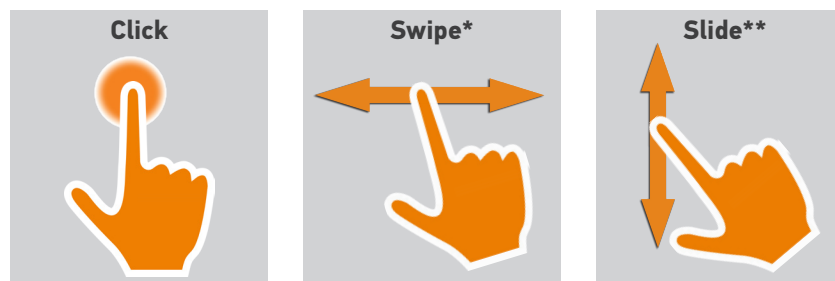
- Remote control settings: languages, screen parameters, management by motion, sounds, about Nina io, reset mode, alarm code
- Groups/equipment settings
- Installer settings: functions only for a professional motorisation and home automation installer

SUMMARY

WELCOME PAGE	2
1. SAFETY	3
2. NINA IO REMOTE CONTROL	5
3. USE NINA IO	13
Control an item of equipment	13
My function	15
Natural Control function	19
Load a scenario	22
Alarm function	23
4. CUSTOMIZE NINA IO	25
Customize equipment	25
Customize groups	29
Customize scenarios	35
Customize remote control	40
5. ADVANCED SETTINGS	46
6. TROUBLESHOOTING	57
7. ABOUT NINA IO	58

Nina io navigation

There are 3 types of gesture to navigate on the screen of Nina io:



* Horizontal sweep

** Vertical sliding

Nina io charger

To charge Nina io remote control, place it on its base.

Nina io remote control functioning when it is on the base: the screen is always ON.

i To deactivate this function, refer to *Manage state of screen when Nina io on base, page 43.*

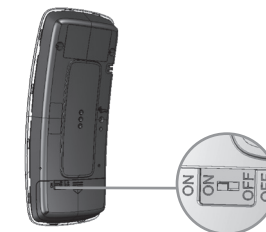
If necessary, use the button at the back of the remote control to switch ON/OFF Nina io.

• Battery level

The battery level is indicated by an evolutive icon as follows:

	Battery full		Battery 25%
	Battery 75%		Battery <10% (flashing)
	Battery 50%		Battery in charge

i When Nina io is in low battery, the intensity of backlight is reduced at 30%.
To charge or change the battery, refer to *Nina io battery, page 9.*



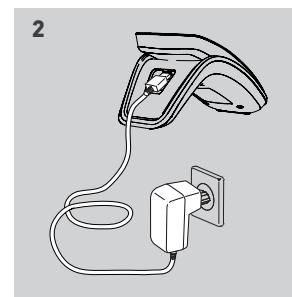
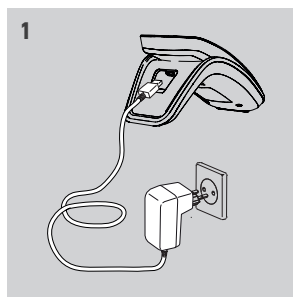
SUMMARY

WELCOME PAGE	2
1. SAFETY	3
2. NINA IO REMOTE CONTROL	5
3. USE NINA IO	13
Control an item of equipment	13
My function	15
Natural Control function	19
Load a scenario	22
Alarm function	23
4. CUSTOMIZE NINA IO	25
Customize equipment	25
Customize groups	29
Customize scenarios	35
Customize remote control	40
5. ADVANCED SETTINGS	46
6. TROUBLESHOOTING	57
7. ABOUT NINA IO	58

Nina io battery

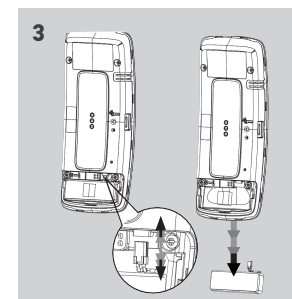
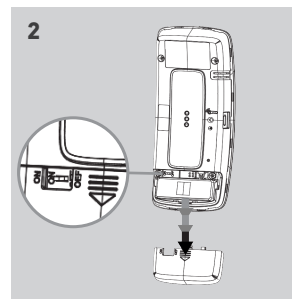
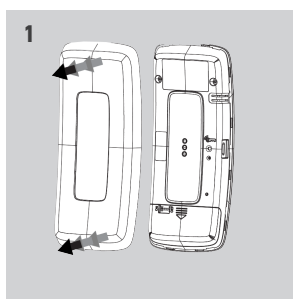
• Charging the battery

1. Insert the extremity of the charger in the back of the base.
2. Plug the charger into an electrical outlet.
3. Wait about two hours when Nina io is fully discharged.




• Changing the battery

1. Remove the back face of the remote control to access the cover of the battery.
2. Turn off Nina io remote control and remove the cover of the battery by pushing it down.
3. Unplug the battery and then remove it from the remote control.



 When the battery is removed, replace it with a new one, turn on Nina io and put on its battery cover and its back face. Refer to the safety instructions [SAFETY, page 3](#).

 Ensure batteries are separated from other types of waste and are recycled via a local recycling center.



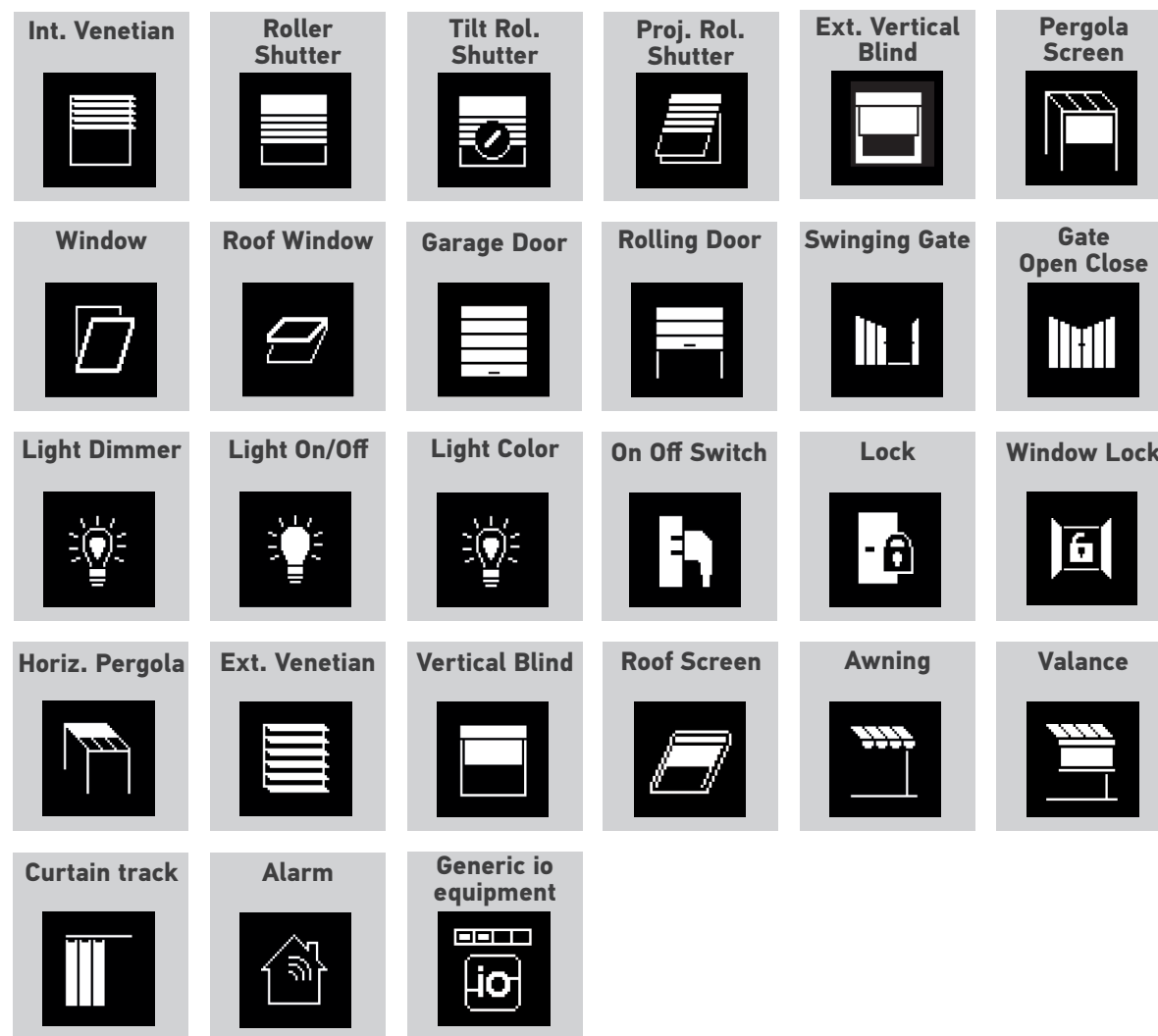
SUMMARY

WELCOME PAGE	2
1. SAFETY	3
2. NINA IO REMOTE CONTROL	5
3. USE NINA IO	13
Control an item of equipment	13
My function	15
Natural Control function	19
Load a scenario	22
Alarm function	23
4. CUSTOMIZE NINA IO	25
Customize equipment	25
Customize groups	29
Customize scenarios	35
Customize remote control	40
5. ADVANCED SETTINGS	46
6. TROUBLESHOOTING	57
7. ABOUT NINA IO	58

What is an equipment?

The Equipment menu allows to control and supervise the status of all equipment, one by one.

List of io compatible equipment and associated icons:



Icons listed above are evolutive, their status differs according to their position: 
Other io-homecontrol® actuators are available (Up / Stop / Down functions with generic icons)

SUMMARY

WELCOME PAGE	2
1. SAFETY	3
2. NINA IO REMOTE CONTROL	5
3. USE NINA IO	13
Control an item of equipment	13
My function	15
Natural Control function	19
Load a scenario	22
Alarm function	23
4. CUSTOMIZE NINA IO	25
Customize equipment	25
Customize groups	29
Customize scenarios	35
Customize remote control	40
5. ADVANCED SETTINGS	46
6. TROUBLESHOOTING	57
7. ABOUT NINA IO	58

What is a group?






The Groups menu allows to group items of equipment together in order to simultaneously control them.

A group can combine:

- A range of equipment (e.g. all the lights, rolling shutters or blinds of home),
- Items of equipment classified by rooms (e.g. all the equipment of the living room, the bathroom, etc.),
- Any group whatsoever (e.g north facade, south facade, etc.).

This way, it is easy to control all equipment by scenario with one click.

25 GROUPS ARE DEFINED BY DEFAULT AT INSTALLATION:

Home		Bathroom		Office		Ground floor		Pergola	
Living room		Bedroom 1		Playground		Outside		Lights	
Dining room 1		Bedroom 2		Terrace		Garage		Rolling shutters	
Dining room 2		Baby room		Second floor		Facade 1		Ext. venetian blinds	
Kitchen		Children's bedroom		First floor		Facade 2		Zip Screen	

5 NEW GROUPS CAN BE CREATED (MAXIMUM 30 GROUPS)

- Possibilities for customization:

Modify the equipment list of a group, [page 29](#)

Create a new group, [page 32](#)

Rename a group, [page 30](#)

Delete a group, [page 33](#)

Change a group icon, [page 31](#)

Organize groups list, [page 34](#)



To access all the customization functions of a group, refer to [Customize groups, page 29](#).

SUMMARY

WELCOME PAGE	2
1. SAFETY	3
2. NINA IO REMOTE CONTROL	5
3. USE NINA IO	13
Control an item of equipment	13
My function	15
Natural Control function	19
Load a scenario	22
Alarm function	23
4. CUSTOMIZE NINA IO	25
Customize equipment	25
Customize groups	29
Customize scenarios	35
Customize remote control	40
5. ADVANCED SETTINGS	46
6. TROUBLESHOOTING	57
7. ABOUT NINA IO	58

What is a scenario?

The Groups menu allows to launch predefined actions, called scenarios, associated to one or more items of equipment of the selected group (e.g. open the vertical blind of the living room, switch on the light of the bedroom, place the rolling shutter of the kitchen in My position, etc.).

It is also possible to create new scenarios by programming one or more items of equipment of a group at the same time. For example, the 'I go' scenario can regroup the closing of the exterior venetian, the closing of the rolling shutter and the extinction of the lights.

In the created scenarios, the position of each equipment is configurable to completely personalize the home ambiance in one click. For example, the 'Evening ambiance' scenario can program at the same time the closing of the rolling shutter to 75% and the extinction of the lights.

- Scenarios defined by default at installation

Open/Close

Switch ON/OFF

My position

Up/Down

- Possibilities for customization:

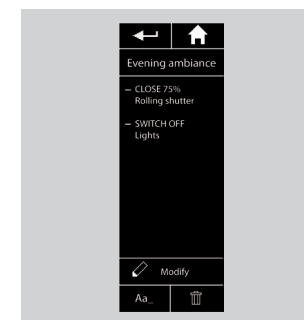
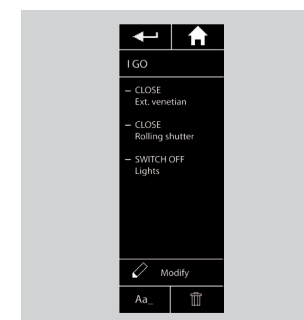
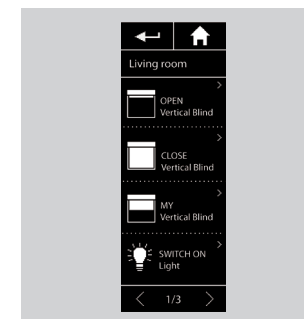
Rename a scenario, [page 36](#)

Create a scenario, [page 36](#)

Modify a scenario, [page 37](#)

Delete a scenario, [page 38](#)

Organize scenarios list, [page 39](#)



SUMMARY

WELCOME PAGE 2

1. SAFETY 3

2. NINA IO REMOTE CONTROL 5

3. USE NINA IO 13

Control an item of equipment 13

My function 15

Natural Control function 19

Load a scenario 22

Alarm function 23

4. CUSTOMIZE NINA IO 25

Customize equipment 25

Customize groups 29

Customize scenarios 35

Customize remote control 40

5. ADVANCED SETTINGS 46

6. TROUBLESHOOTING 57

7. ABOUT NINA IO 58

3. USE NINA IO

Control an item of equipment

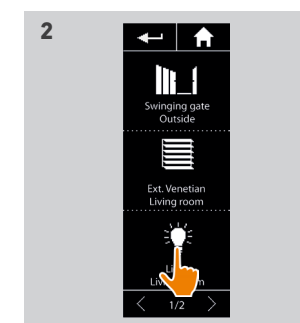
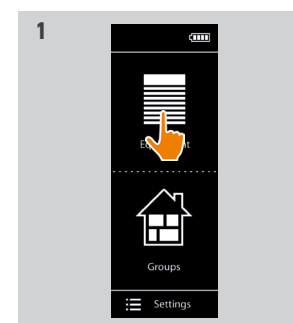
Select an item of equipment	13
Control the equipment	13
Possibilities for control	14
Other available options	14

• Select an item of equipment

1. Select the Equipment menu by clicking on the corresponding icon.
2. Select the equipment to control by clicking on the corresponding icon.

i All equipment is available using the navigation buttons or the swipe.

> The available levels for the control of the selected equipment are displayed.

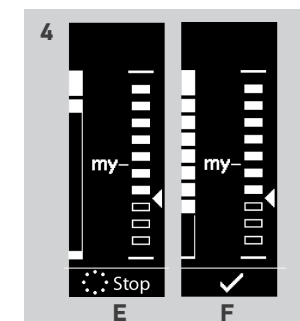
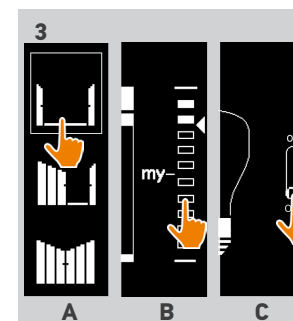


• Control the equipment

3. Select the desired setting level by clicking or sliding on the corresponding position (A, B or C).
4. The action starts once the button is released:

> A wheel and a Stop button are displayed when the action is ongoing (E). Click on this button to stop the action at any time.

> A checkmark is displayed when the action is achieved (F).



i If a problem occurs, the detected default is displayed and it is possible to start again the control of the equipment.

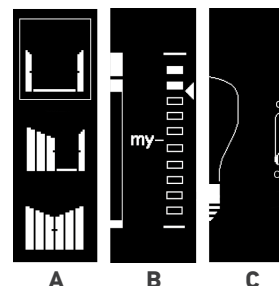
i By returning to the list of equipment, the icon of the selected equipment is changed according to its new position.

SUMMARY

WELCOME PAGE	2
1. SAFETY	3
2. NINA IO REMOTE CONTROL	5
3. USE NINA IO	13
Control an item of equipment	13
My function	15
Natural Control function	19
Load a scenario	22
Alarm function	23
4. CUSTOMIZE NINA IO	25
Customize equipment	25
Customize groups	29
Customize scenarios	35
Customize remote control	40
5. ADVANCED SETTINGS	46
6. TROUBLESHOOTING	57
7. ABOUT NINA IO	58

Select an item of equipment	13
Control the equipment	13
Possibilities for control	14
Other available options	14

- Possibilities for control
 - Open/ Close (A)
 - Adjust (B)
 - Switch ON/OFF or Lock/Unlock (C)



- Other available options

Other options can be used to customize the control of equipment. These options are available according to the selected equipment and are displayed at the bottom of the level scale.

Click on the following icons or checkboxes to activate the corresponding options before or during the control of equipment:

	<input checked="" type="checkbox"/>	To activate the discrete mode: slows the movement of the roller shutter RS100 through its full travel.
	<input type="checkbox"/>	To deactivate the discrete mode of the roller shutter RS100.
		To control the orientation of the slats on venetian (exterior and interior) and roller shutters with tilting slates (gradhermetic).
		To control the raising/lowering of the slats on venetian blinds (exterior and interior) and roller shutters with tilting slates (gradhermetic).
	<input checked="" type="checkbox"/>	To activate the people option of the window lock: allows the opening of the house from the inside if a person is present inside.
	<input type="checkbox"/>	To deactivate the people option of the window lock: does not allow the opening of the house from the inside.
		To angle out the roller shutter.
		To angle in the roller shutter.
	Release	To release the canvas of the vertical blind when it is in low position.
	Stretch	To stretch the canvas of the vertical blind when it is in low position.

SUMMARY

WELCOME PAGE	2
1. SAFETY	3
2. NINA IO REMOTE CONTROL	5
3. USE NINA IO	13
Control an item of equipment	13
My function	15
Natural Control function	19
Load a scenario	22
Alarm function	23
4. CUSTOMIZE NINA IO	25
Customize equipment	25
Customize groups	29
Customize scenarios	35
Customize remote control	40
5. ADVANCED SETTINGS	46
6. TROUBLESHOOTING	57
7. ABOUT NINA IO	58

My function

Use the My function	15
Memorize the My position	16
Modify the My position	17
Delete the My position	18

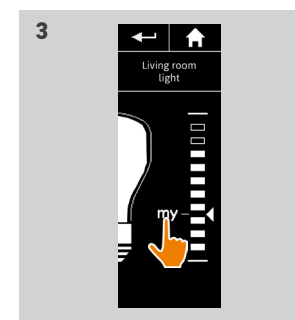
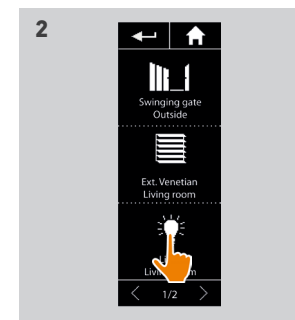
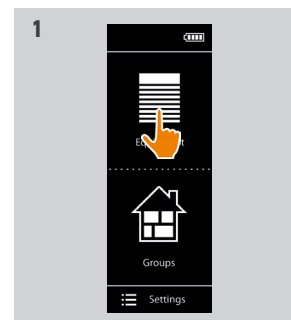
The My function is used to memorize the favorite position of equipment, to customize the control of home according to the preferences of the user.

- The My function is available on most equipment. If the function is not available for an equipment, the My icon does not display.
- If the My position is already set, the My icon is displayed next to the memorized level. To modify or delete this position, see [page 17](#).
- If the My position is not preset, the My icon is dimmed at the top of the level scale. To memorize a My position, see [page 16](#).

• Use the My function

Once the setting of the My level is performed, the equipment can automatically be placed in its favorite position, in only one click.

1. Select the Equipment menu by clicking on the corresponding icon.
2. Select the desired equipment by clicking on the corresponding icon.
 - > The My position of the selected equipment is already set: the My icon is displayed next to the memorized level.
3. Briefly click on the My icon to place the selected equipment in the My position.
 - > The My button becomes outlined.
 - > A wheel and a Stop button are displayed when the action is ongoing. Click on this button to stop the action at any time.
 - > A checkmark is displayed when the action is achieved.



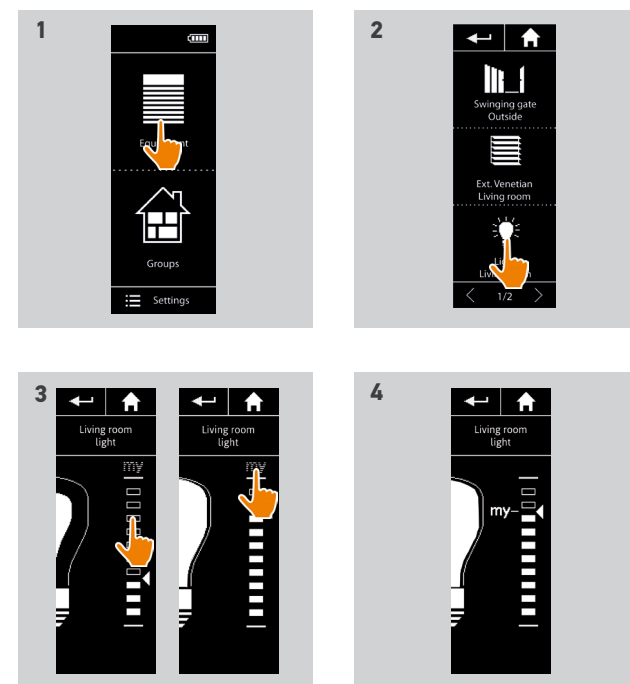
SUMMARY

WELCOME PAGE	2
1. SAFETY	3
2. NINA IO REMOTE CONTROL	5
3. USE NINA IO	13
Control an item of equipment	13
My function	15
Natural Control function	19
Load a scenario	22
Alarm function	23
4. CUSTOMIZE NINA IO	25
Customize equipment	25
Customize groups	29
Customize scenarios	35
Customize remote control	40
5. ADVANCED SETTINGS	46
6. TROUBLESHOOTING	57
7. ABOUT NINA IO	58

Use the My function	15
Memorize the My position	16
Modify the My position	17
Delete the My position	18

• Memorize the My position

1. Select the Equipment menu by clicking on the corresponding icon.
2. Select the desired equipment by clicking on the corresponding icon.
 - > The My position of the selected equipment is not set: the My icon is dimmed at the top of level scale.
3. Select the setting level of the selected equipment by clicking or by sliding on the corresponding position and then press and hold the dimmed My icon for at least 5 seconds.
4. After this delay, the My icon is automatically placed next to the predefined setting level.
 - > The My position is memorized.



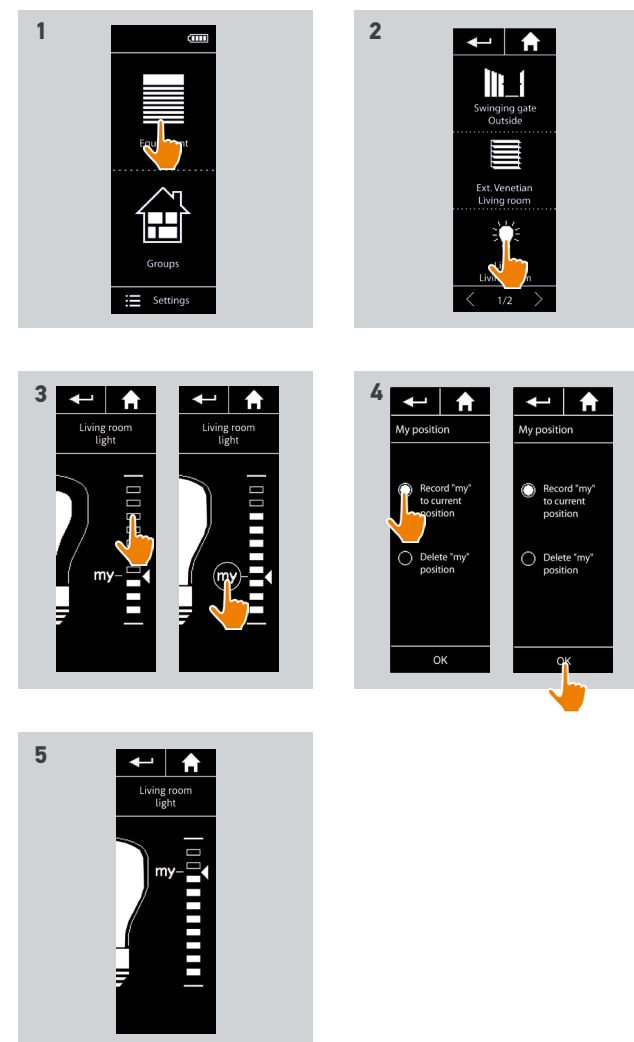
SUMMARY

WELCOME PAGE	2
1. SAFETY	3
2. NINA IO REMOTE CONTROL	5
3. USE NINA IO	13
Control an item of equipment	13
My function	15
Natural Control function	19
Load a scenario	22
Alarm function	23
4. CUSTOMIZE NINA IO	25
Customize equipment	25
Customize groups	29
Customize scenarios	35
Customize remote control	40
5. ADVANCED SETTINGS	46
6. TROUBLESHOOTING	57
7. ABOUT NINA IO	58

Use the My function	15
Memorize the My position	16
Modify the My position	17
Delete the My position	18

• Modify the My position

1. Select the Equipment menu by clicking on the corresponding icon.
2. Select the desired equipment by clicking on the corresponding icon.
 - > The My position of the selected equipment is already set: the My icon is displayed next to the memorized level.
3. Select a new setting level by clicking or sliding on the corresponding position and then press and hold the My icon for at least 5 seconds.
4. Select the option 'Record "my" to current position', then click on OK.
5. After this validation, the My icon is placed next to the new predefined setting level.
 - > The new My position is memorized.



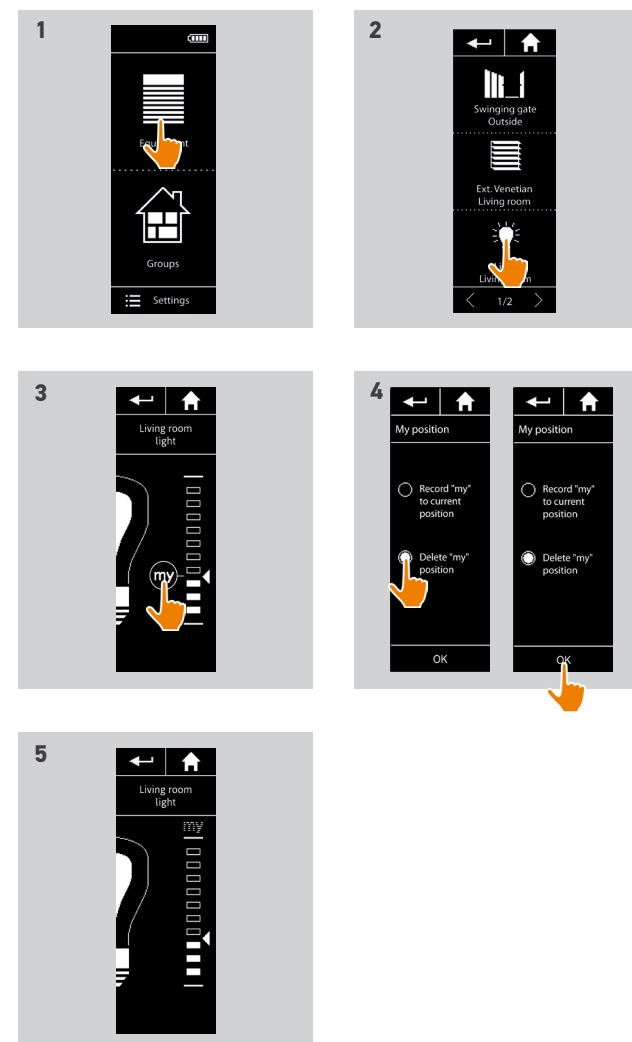
SUMMARY

WELCOME PAGE	2
1. SAFETY	3
2. NINA IO REMOTE CONTROL	5
3. USE NINA IO	13
Control an item of equipment	13
My function	15
Natural Control function	19
Load a scenario	22
Alarm function	23
4. CUSTOMIZE NINA IO	25
Customize equipment	25
Customize groups	29
Customize scenarios	35
Customize remote control	40
5. ADVANCED SETTINGS	46
6. TROUBLESHOOTING	57
7. ABOUT NINA IO	58

Use the My function	15
Memorize the My position	16
Modify the My position	17
Delete the My position	18

• Delete the My position

1. Select the Equipment menu by clicking on the corresponding icon.
2. Select the desired equipment by clicking on the corresponding icon.
 - > The My position of the selected equipment is already set: the My icon is displayed next to the memorized level.
3. Click on the My icon for at least 5 seconds to remove its memorized position.
4. Select the option 'Delete "my" position', then click on OK.
5. After this validation, the My icon is automatically dimmed and placed at the top of level scale.
 - > The My position is deleted.



SUMMARY

WELCOME PAGE	2
1. SAFETY	3
2. NINA IO REMOTE CONTROL	5
3. USE NINA IO	13
Control an item of equipment	13
My function	15
Natural Control function	19
Load a scenario	22
Alarm function	23
4. CUSTOMIZE NINA IO	25
Customize equipment	25
Customize groups	29
Customize scenarios	35
Customize remote control	40
5. ADVANCED SETTINGS	46
6. TROUBLESHOOTING	57
7. ABOUT NINA IO	58

Natural Control function

Use the Natural Control function	20
Associate equipment to the Natural Control function	21
Activate the Natural Control function	21

The Natural Control function allows to control all favorite equipment in only one click and a single gesture, directly from the home screen.

No need to select the equipment or the group, or to enter the functionalities of Nina io. After having associated one or more items of equipment to the Natural Control function, intuitively adjust their position, simply by touching the central area of the screen and by orienting the remote control.

 There are two possibilities of position for all equipment: up and down.

'Up' and 'Down', depending on the type of equipment will mean:

- To open/close (door, blind, portal, window, etc.)
- To turn on/off (light, plug)
- To unlock/lock (window)

 All equipment may be associated to this function, except the alarm.

SUMMARY

WELCOME PAGE	2
1. SAFETY	3
2. NINA IO REMOTE CONTROL	5
3. USE NINA IO	13
Control an item of equipment	13
My function	15
Natural Control function	19
Load a scenario	22
Alarm function	23
4. CUSTOMIZE NINA IO	25
Customize equipment	25
Customize groups	29
Customize scenarios	35
Customize remote control	40
5. ADVANCED SETTINGS	46
6. TROUBLESHOOTING	57
7. ABOUT NINA IO	58

Use the Natural Control function	20
Associate equipment to the Natural Control function	21
Activate the Natural Control function	21

- Use the Natural Control function

1. Touch and hold the central area to launch the Natural Control function.

 Release it to return to the home screen.

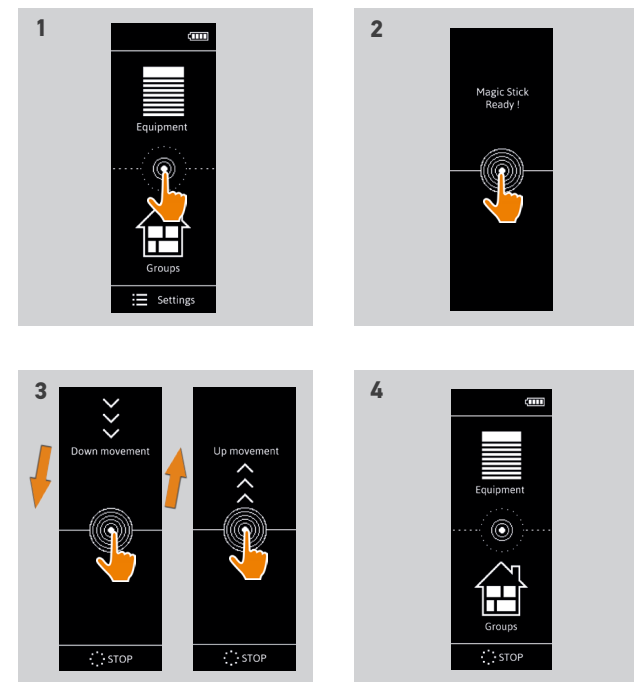
2. When the function starts, the message 'Natural Control is ready' is displayed.

3. Without releasing the central area of the screen, raise/lower the remote control up/down to launch the raise/descent or the opening/closing or the turning on/off or the locking/unlocking of the favorite equipment.

> Up or down arrows are displayed to indicate the ongoing movement.

> A wheel and a Stop button are displayed when the action is ongoing. Click on this button to stop the action at any time.

4. When the central area is released, the home screen is automatically displayed.



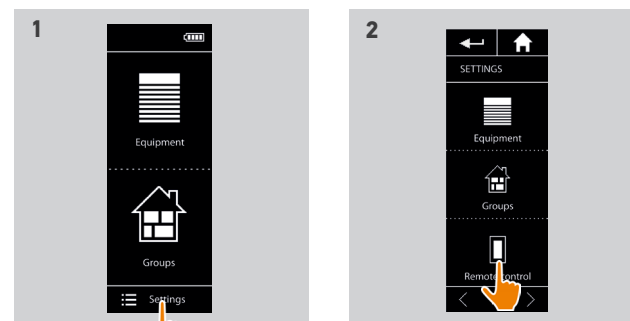
SUMMARY

WELCOME PAGE	2
1. SAFETY	3
2. NINA IO REMOTE CONTROL	5
3. USE NINA IO	13
Control an item of equipment	13
My function	15
Natural Control function	19
Load a scenario	22
Alarm function	23
4. CUSTOMIZE NINA IO	25
Customize equipment	25
Customize groups	29
Customize scenarios	35
Customize remote control	40
5. ADVANCED SETTINGS	46
6. TROUBLESHOOTING	57
7. ABOUT NINA IO	58

Use the Natural Control function	20
Associate equipment to the Natural Control function	21
Activate the Natural Control function	21

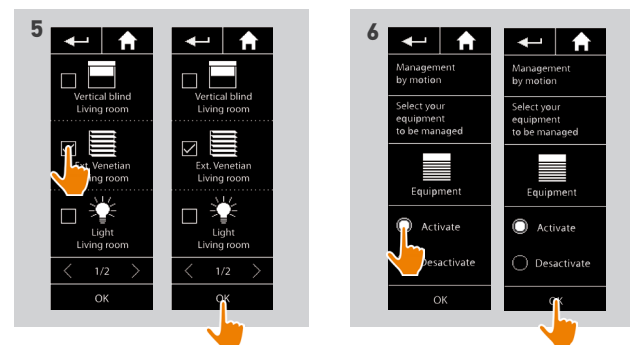
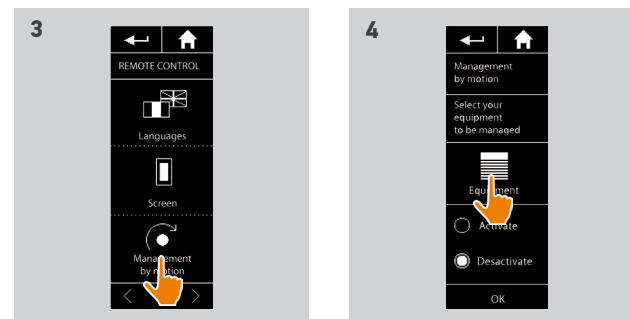
- Associate equipment to the Natural Control function

1. Select the Settings menu by clicking on the corresponding icon.
2. Click on the Remote control icon.
3. Click on the Management by motion icon.
4. Click on the Equipment icon to access the available list of equipment.
5. Select one or several items of equipment to associate to the Natural Control function and click on OK to save.



- Activate the Natural Control function

6. Select the Activate option and then click on OK to save.
 - > The Natural Control function is activated: the home screen displays circles in the middle:



SUMMARY

WELCOME PAGE	2
1. SAFETY	3
2. NINA IO REMOTE CONTROL	5
3. USE NINA IO	13
Control an item of equipment	13
My function	15
Natural Control function	19
Load a scenario	22
Alarm function	23
4. CUSTOMIZE NINA IO	25
Customize equipment	25
Customize groups	29
Customize scenarios	35
Customize remote control	40
5. ADVANCED SETTINGS	46
6. TROUBLESHOOTING	57
7. ABOUT NINA IO	58

Load a scenario

• Select a room/group

1. Select the Groups menu by clicking on the corresponding icon.
2. Select the room or the group containing the equipment to control by clicking on the corresponding icon.

 All rooms and groups are available using the navigation buttons or the swipe.


> The available scenarios for the control of the selected room/group are displayed.

• Launch the scenario

3. Select the scenario by clicking on the corresponding icon or name.
4. The action starts once the button is released:

> A wheel and a Stop button are displayed when the action is ongoing (A). Click on this button to stop the action at any time.

> A checkmark is displayed for few seconds when the action is achieved (B).

 If a problem occurs, the detected default is displayed and it is possible to start again the launching of the scenario.

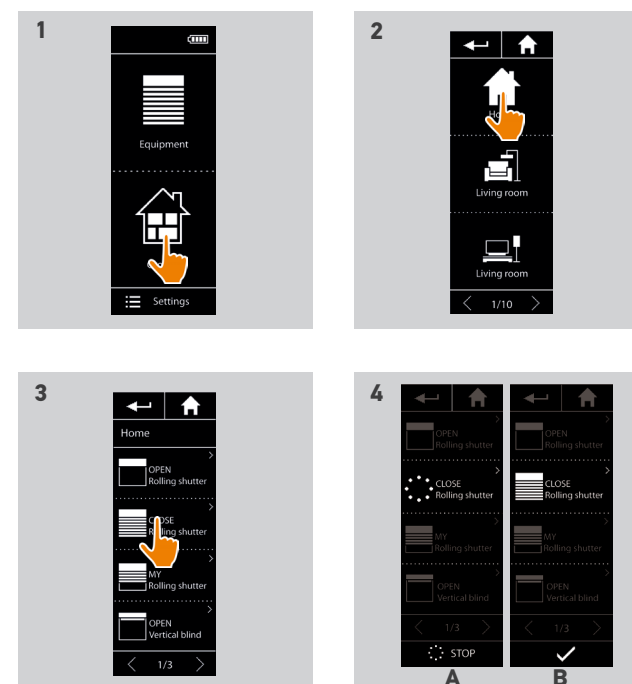
• Scenarios defined by default at installation:

Open / Close

Open/Close all

Switch ON /OFF

My



SUMMARY

WELCOME PAGE	2
1. SAFETY	3
2. NINA IO REMOTE CONTROL	5
3. USE NINA IO	13
Control an item of equipment	13
My function	15
Natural Control function	19
Load a scenario	22
Alarm function	23
4. CUSTOMIZE NINA IO	25
Customize equipment	25
Customize groups	29
Customize scenarios	35
Customize remote control	40
5. ADVANCED SETTINGS	46
6. TROUBLESHOOTING	57
7. ABOUT NINA IO	58

Alarm function

Deactivate the alarm	23
Change the alarm code	24

The alarm function is also configurable: it is possible to deactivate and re-activate the home alarm with Nina io.

To deactivate the home alarm using Nina io, it is necessary to enter a code, specific for Nina io and different from the alarm code. The Nina io alarm code is not necessary to activate the alarm.


By default, the code is 0000. The Nina io alarm code can be modified in the Settings menu.

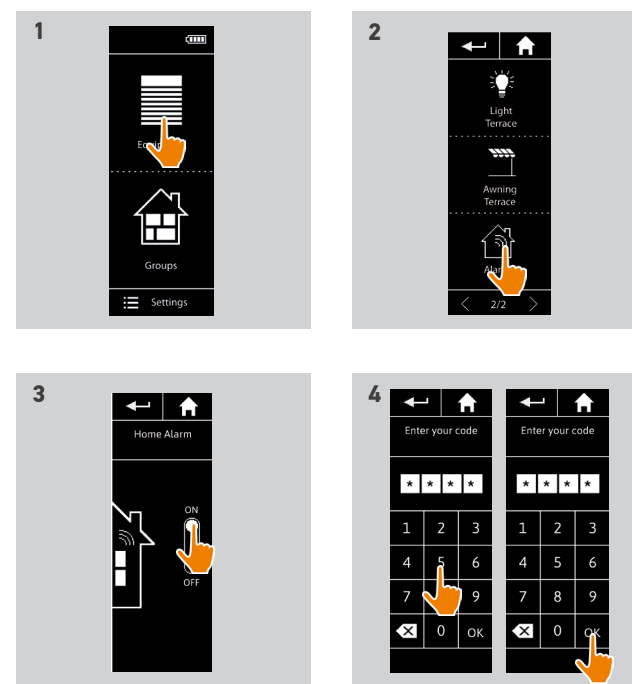
• Deactivate the alarm

1. Select the Equipment menu by clicking on the corresponding icon.
2. Click on the alarm icon in the equipment list.

 The alarm icon is displayed in the equipment list only if an alarm is associated to Nina io remote control.

3. Slide the button to the OFF position.
 - > A message asks to enter a code to deactivate the alarm.
4. Enter the code (0000 by default) using the keyboard and click on OK to validate.
 - > The alarm is deactivate.

 To reactivate the alarm, follow the same steps, by sliding the button to the ON position. No code is required.



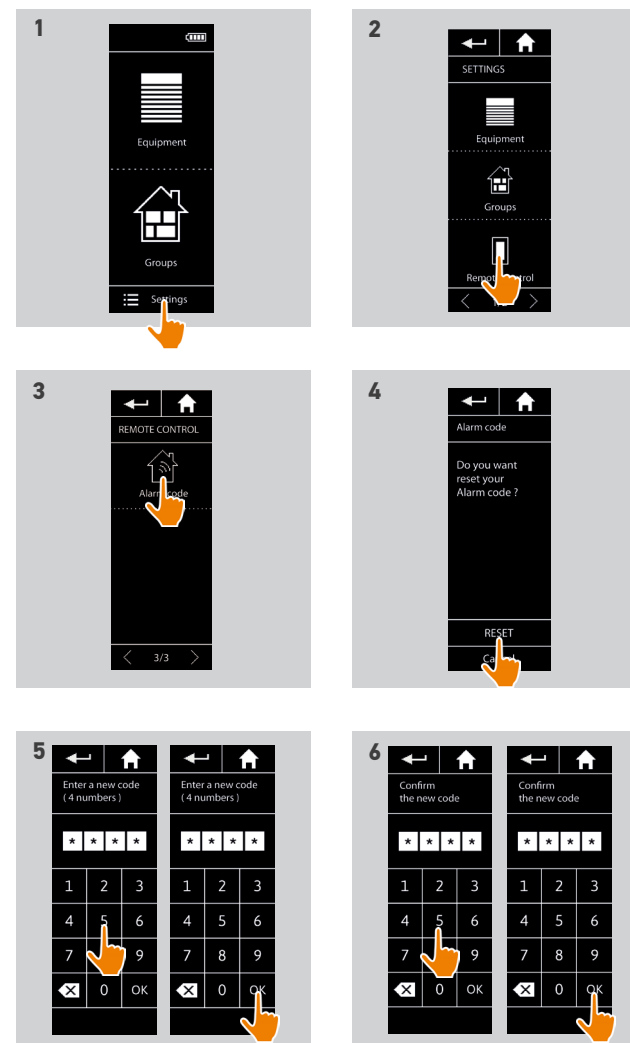
SUMMARY

WELCOME PAGE	2
1. SAFETY	3
2. NINA IO REMOTE CONTROL	5
3. USE NINA IO	13
Control an item of equipment	13
My function	15
Natural Control function	19
Load a scenario	22
Alarm function	23
4. CUSTOMIZE NINA IO	25
Customize equipment	25
Customize groups	29
Customize scenarios	35
Customize remote control	40
5. ADVANCED SETTINGS	46
6. TROUBLESHOOTING	57
7. ABOUT NINA IO	58

Deactivate the alarm	23
Change the alarm code	24

• Change the alarm code

1. Select the Settings menu by clicking on the corresponding icon.
2. Click on the Remote control icon to enter the corresponding settings settings.
3. Click on the Alarm code icon.
 - > A message asks to confirm the reset of the alarm code.
4. Click on RESET to confirm.
 - > A keyboard is displayed.
5. Enter the new code using the keyboard and click on OK to validate.
 - > A message asks to confirm the new code.
6. Re-enter the new code to confirm it.
 - > The alarm code is updated.



SUMMARY

WELCOME PAGE	2
1. SAFETY	3
2. NINA IO REMOTE CONTROL	5
3. USE NINA IO	13
Control an item of equipment	13
My function	15
Natural Control function	19
Load a scenario	22
Alarm function	23
4. CUSTOMIZE NINA IO	25
Customize equipment	25
Customize groups	29
Customize scenarios	35
Customize remote control	40
5. ADVANCED SETTINGS	46
6. TROUBLESHOOTING	57
7. ABOUT NINA IO	58

4. CUSTOMIZE NINA IO

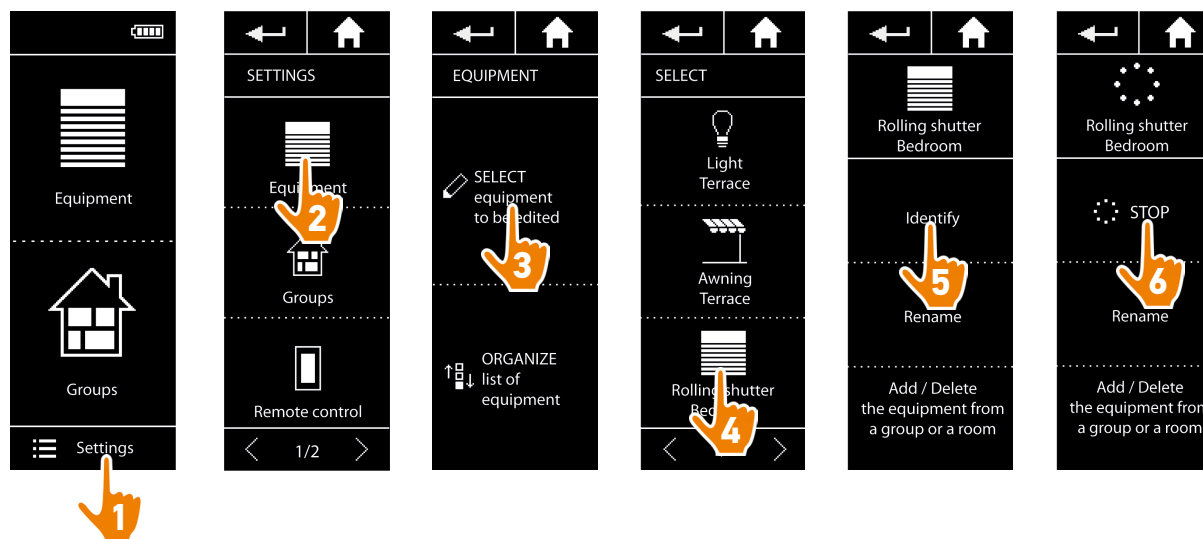
Customize equipment

Identify an item of equipment	25
Rename an item of equipment	26
Add/delete an item of equipment into a group	27
Organize the list of equipment	28

- Identify an item of equipment

The identify function allows to locate an item of equipment in the home: the corresponding equipment is triggered or is executing a back-and-forth movement to be easily spotted.

Select the equipment in the Settings menu and click on Identify to activate it. When the equipment is located, click on the Stop button to stop its movement:



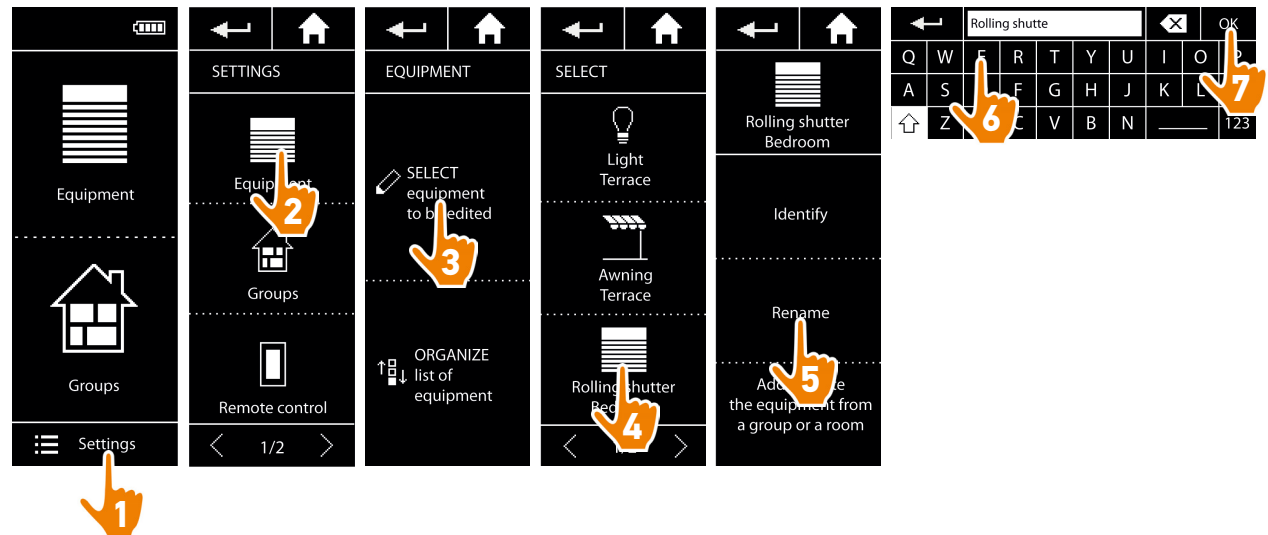
SUMMARY

WELCOME PAGE	2
1. SAFETY	3
2. NINA IO REMOTE CONTROL	5
3. USE NINA IO	13
Control an item of equipment	13
My function	15
Natural Control function	19
Load a scenario	22
Alarm function	23
4. CUSTOMIZE NINA IO	25
Customize equipment	25
Customize groups	29
Customize scenarios	35
Customize remote control	40
5. ADVANCED SETTINGS	46
6. TROUBLESHOOTING	57
7. ABOUT NINA IO	58

Identify an item of equipment	25
Rename an item of equipment	26
Add/delete an item of equipment into a group	27
Organize the list of equipment	28

- Rename an item of equipment

Select the corresponding equipment in the Settings menu and rename it using the keyboard:



SUMMARY

WELCOME PAGE 2

1. SAFETY 3

2. NINA IO REMOTE CONTROL 5

3. USE NINA IO 13

Control an item of equipment 13

My function 15

Natural Control function 19

Load a scenario 22

Alarm function 23

4. CUSTOMIZE NINA IO 25

Customize equipment 25

Customize groups 29

Customize scenarios 35

Customize remote control 40

5. ADVANCED SETTINGS 46

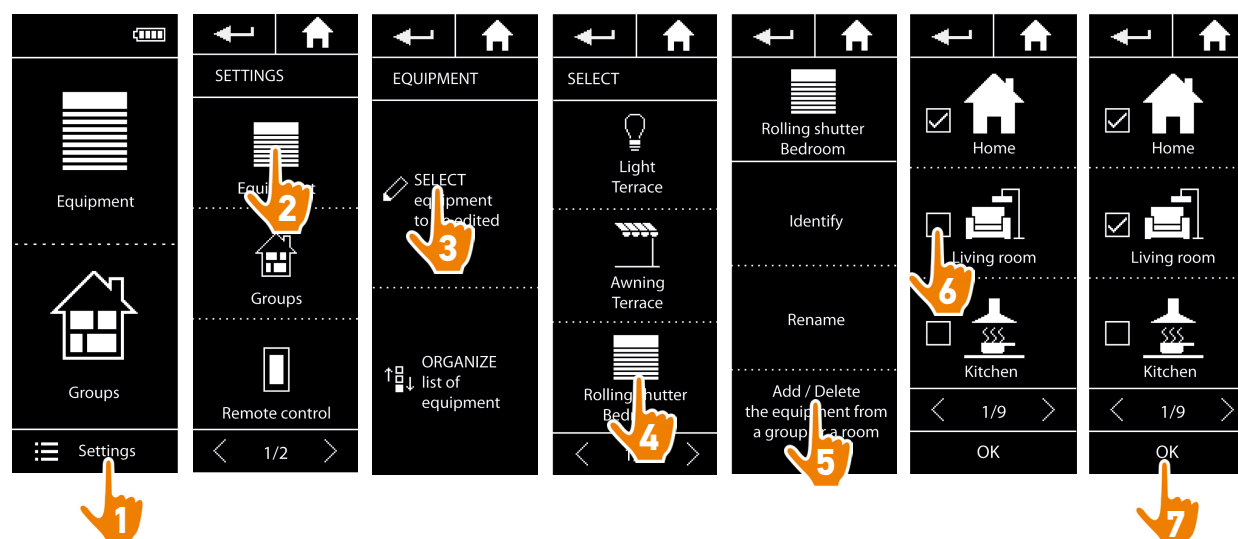
6. TROUBLESHOOTING 57

7. ABOUT NINA IO 58

Identify an item of equipment	25
Rename an item of equipment	26
Add/delete an item of equipment into a group	27
Organize the list of equipment	28

• Add/delete an item of equipment into a group

Select the corresponding equipment in the Settings menu and check/uncheck the checkboxes of the related groups:



- Groups containing the selected equipment are already checked when accessing to the groups list.
- It is possible to choose one or several groups for a same item of equipment by checking one or several checkboxes.
- If all equipment of a group is deleted, the group will be deleted.

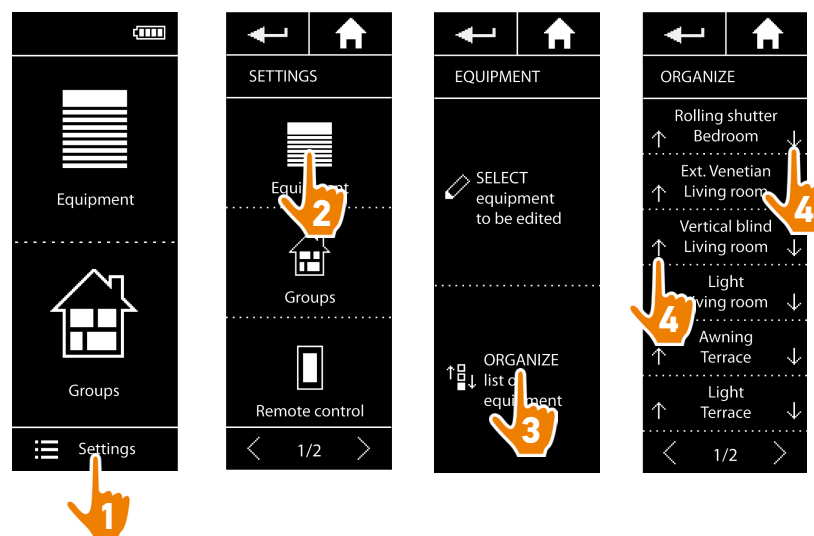
SUMMARY

WELCOME PAGE	2
1. SAFETY	3
2. NINA IO REMOTE CONTROL	5
3. USE NINA IO	13
Control an item of equipment	13
My function	15
Natural Control function	19
Load a scenario	22
Alarm function	23
4. CUSTOMIZE NINA IO	25
Customize equipment	25
Customize groups	29
Customize scenarios	35
Customize remote control	40
5. ADVANCED SETTINGS	46
6. TROUBLESHOOTING	57
7. ABOUT NINA IO	58

Identify an item of equipment	25
Rename an item of equipment	26
Add/delete an item of equipment into a group	27
Organize the list of equipment	28

- **Organize the list of equipment**

In the Settings menu, select the equipment and use the up and down arrows to change their position in the list:



> The order of the list is automatically saved after a click on the up or down arrow.

SUMMARY

WELCOME PAGE 2

1. SAFETY 3

2. NINA IO REMOTE CONTROL 5

3. USE NINA IO 13

Control an item of equipment 13

My function 15

Natural Control function 19

Load a scenario 22

Alarm function 23

4. CUSTOMIZE NINA IO 25

Customize equipment 25

Customize groups 29

Customize scenarios 35

Customize remote control 40

5. ADVANCED SETTINGS 46

6. TROUBLESHOOTING 57

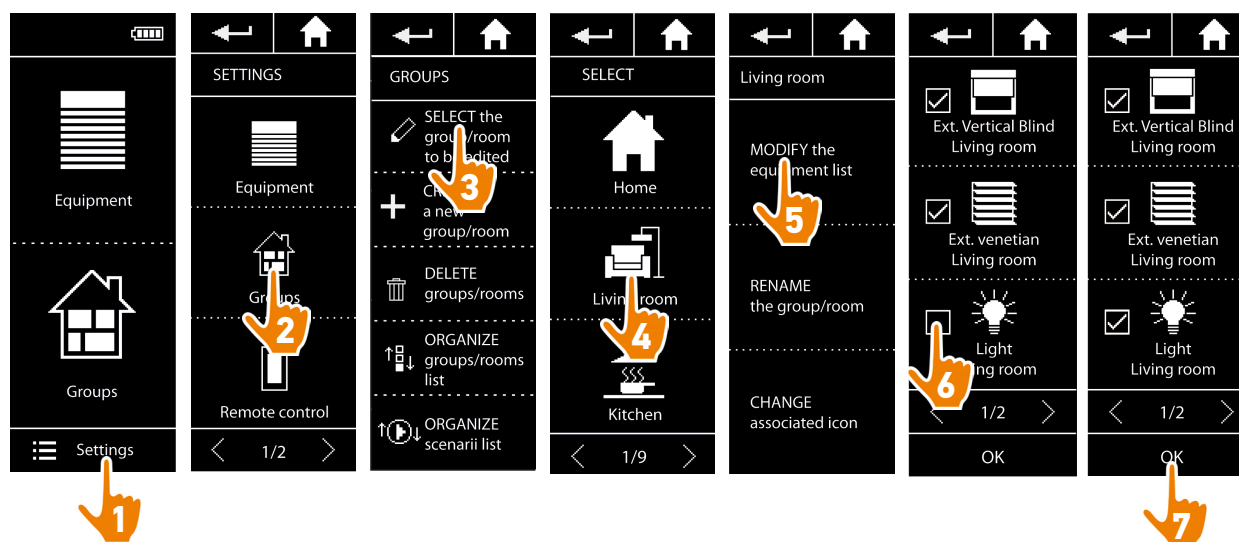
7. ABOUT NINA IO 58

Customize groups

Modify the equipment list of a group	29
Rename a group	30
Change a group icon	31
Create a new group	32
Delete a group	33
Organize groups list	34

• Modify the equipment list of a group

In the Settings menu, select the corresponding group and check/uncheck the checkboxes of its related equipment:



i All the equipment already included in the group is checked when accessing the equipment list. If all equipment is unchecked, the group will be deleted.

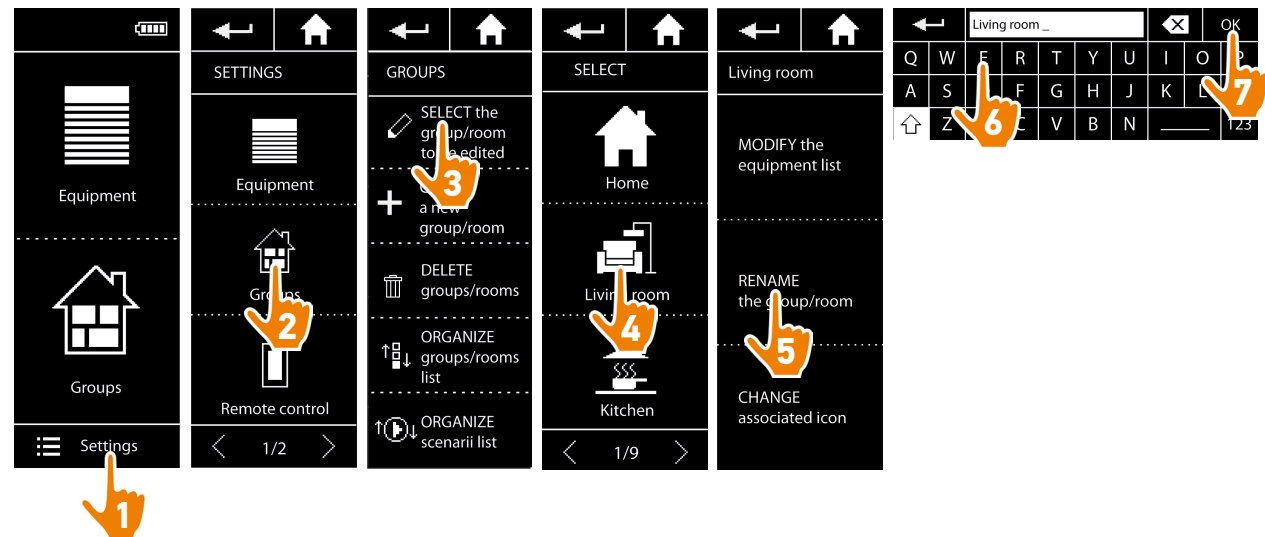
SUMMARY

WELCOME PAGE	2
1. SAFETY	3
2. NINA IO REMOTE CONTROL	5
3. USE NINA IO	13
Control an item of equipment	13
My function	15
Natural Control function	19
Load a scenario	22
Alarm function	23
4. CUSTOMIZE NINA IO	25
Customize equipment	25
Customize groups	29
Customize scenarios	35
Customize remote control	40
5. ADVANCED SETTINGS	46
6. TROUBLESHOOTING	57
7. ABOUT NINA IO	58

Modify the equipment list of a group	29
Rename a group	30
Change a group icon	31
Create a new group	32
Delete a group	33
Organize groups list	34

- **Rename a group**

In the Settings menu, select the corresponding group and rename it using the keyboard:



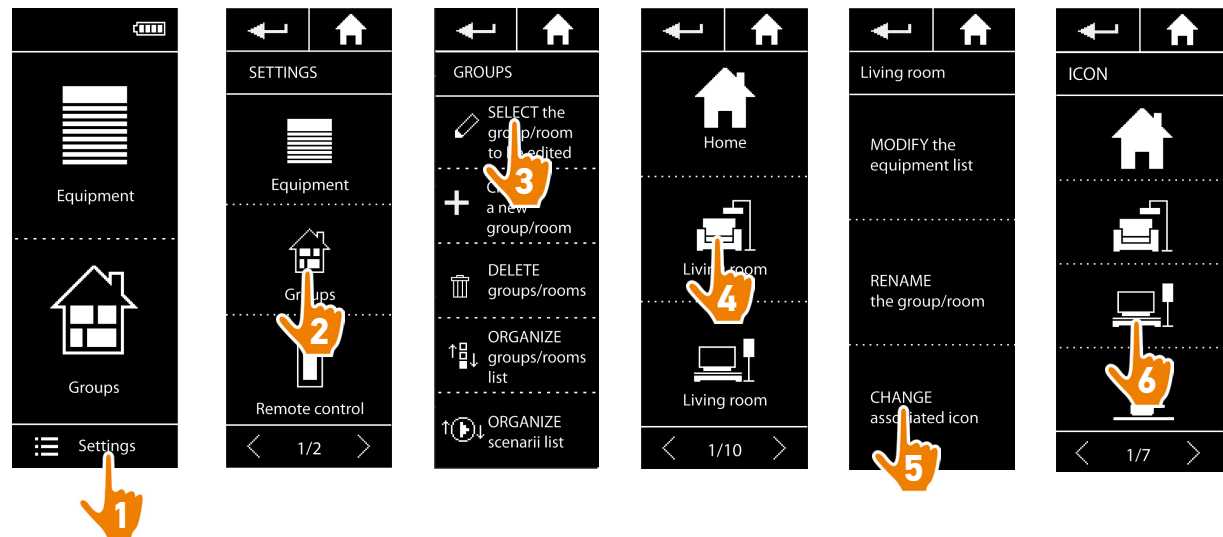
SUMMARY

WELCOME PAGE	2
1. SAFETY	3
2. NINA IO REMOTE CONTROL	5
3. USE NINA IO	13
Control an item of equipment	13
My function	15
Natural Control function	19
Load a scenario	22
Alarm function	23
4. CUSTOMIZE NINA IO	25
Customize equipment	25
Customize groups	29
Customize scenarios	35
Customize remote control	40
5. ADVANCED SETTINGS	46
6. TROUBLESHOOTING	57
7. ABOUT NINA IO	58

Modify the equipment list of a group	29
Rename a group	30
Change a group icon	31
Create a new group	32
Delete a group	33
Organize groups list	34

- Change a group icon

In the Settings menu, select the corresponding group and choose its new icon:



> The new icon is automatically saved when it is selected.

SUMMARY

WELCOME PAGE 2

1. SAFETY 3

2. NINA IO REMOTE CONTROL 5

3. USE NINA IO 13

Control an item of equipment 13

My function 15

Natural Control function 19

Load a scenario 22

Alarm function 23

4. CUSTOMIZE NINA IO 25

Customize equipment 25

Customize groups 29

Customize scenarios 35

Customize remote control 40

5. ADVANCED SETTINGS 46

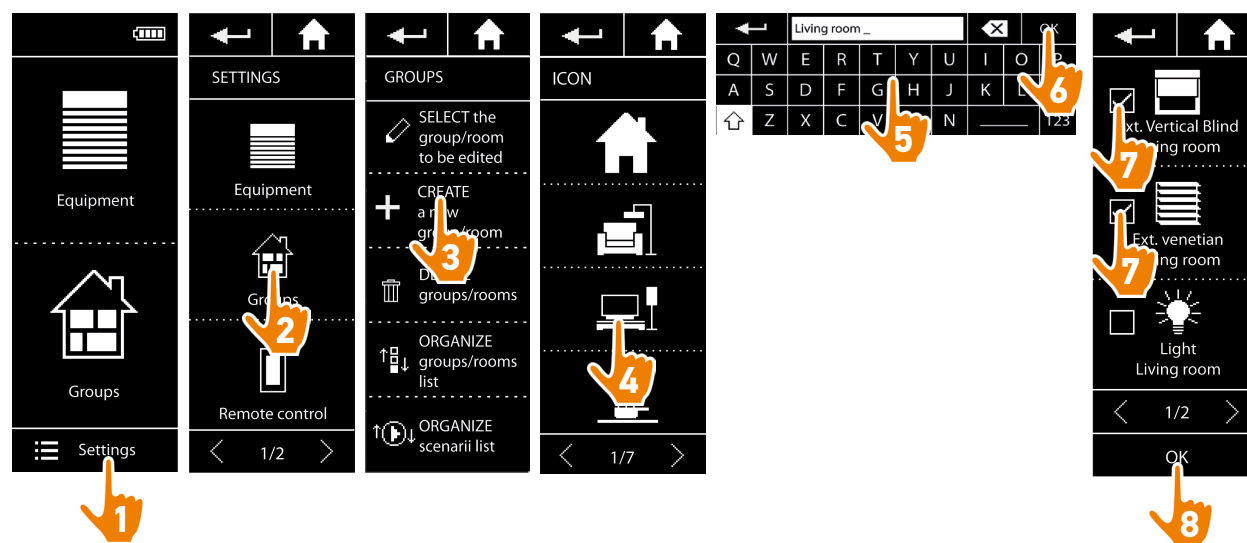
6. TROUBLESHOOTING 57

7. ABOUT NINA IO 58

Modify the equipment list of a group	29
Rename a group	30
Change a group icon	31
Create a new group	32
Delete a group	33
Organize groups list	34

- Create a new group

In the Settings menu, define the icon and the name of the new room/group and select the associated equipment:



- > The new room/group is added at the end of the groups list.
- > The new room/group is automatically created with predefined scenarios.

i To modify, delete or add a scenario, refer to [Customize scenarios, page 35](#).

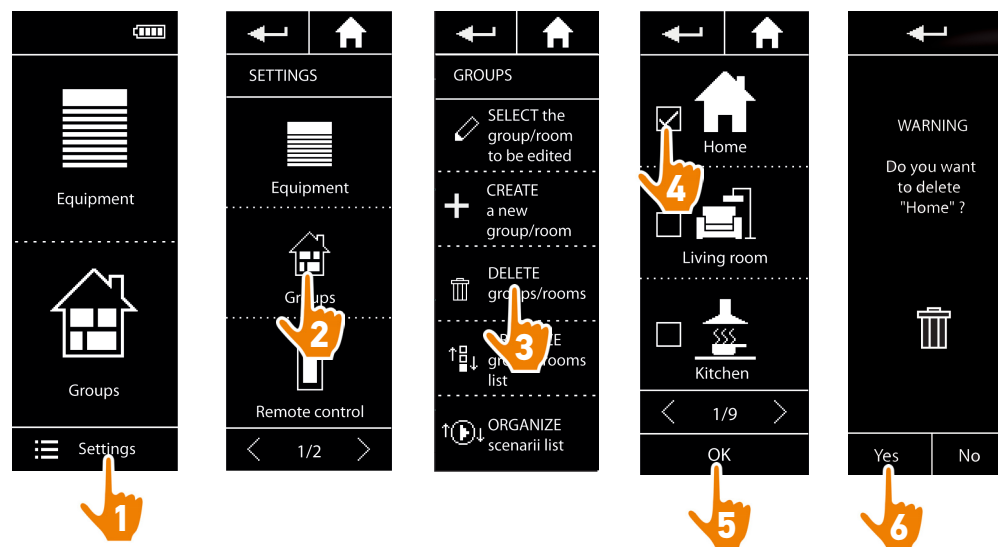
SUMMARY

WELCOME PAGE	2
1. SAFETY	3
2. NINA IO REMOTE CONTROL	5
3. USE NINA IO	13
Control an item of equipment	13
My function	15
Natural Control function	19
Load a scenario	22
Alarm function	23
4. CUSTOMIZE NINA IO	25
Customize equipment	25
Customize groups	29
Customize scenarios	35
Customize remote control	40
5. ADVANCED SETTINGS	46
6. TROUBLESHOOTING	57
7. ABOUT NINA IO	58

Modify the equipment list of a group	29
Rename a group	30
Change a group icon	31
Create a new group	32
Delete a group	33
Organize groups list	34

- Delete a group

In the Settings menu, select the corresponding group and delete it:



i It is possible to delete several groups at the same time by checking several checkboxes when accessing the groups list.

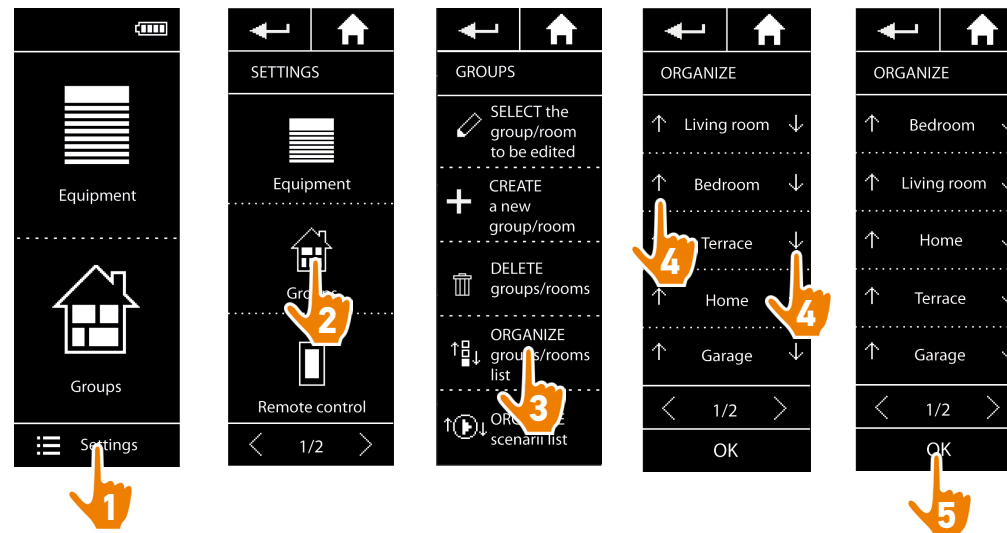
SUMMARY

WELCOME PAGE	2
1. SAFETY	3
2. NINA IO REMOTE CONTROL	5
3. USE NINA IO	13
Control an item of equipment	13
My function	15
Natural Control function	19
Load a scenario	22
Alarm function	23
4. CUSTOMIZE NINA IO	25
Customize equipment	25
Customize groups	29
Customize scenarios	35
Customize remote control	40
5. ADVANCED SETTINGS	46
6. TROUBLESHOOTING	57
7. ABOUT NINA IO	58

Modify the equipment list of a group	29
Rename a group	30
Change a group icon	31
Create a new group	32
Delete a group	33
Organize groups list	34

- **Organize groups list**

In the Settings menu, select the Groups, select Organize list of groups/rooms and use the up/down arrows to change their position in the list:



SUMMARY

WELCOME PAGE 2

1. SAFETY 3

2. NINA IO REMOTE CONTROL 5

3. USE NINA IO 13

Control an item of equipment 13

My function 15

Natural Control function 19

Load a scenario 22

Alarm function 23

4. CUSTOMIZE NINA IO 25

Customize equipment 25

Customize groups 29

Customize scenarios 35

Customize remote control 40

5. ADVANCED SETTINGS 46

6. TROUBLESHOOTING 57

7. ABOUT NINA IO 58

Customize scenarios

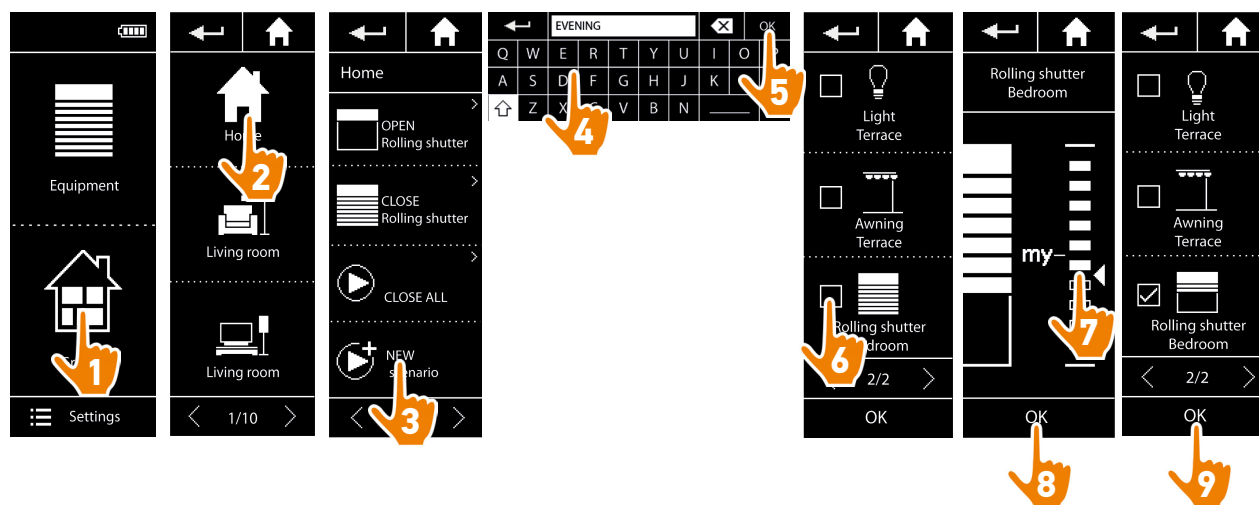
 Predefined scenarios cannot be renamed or modified. They only can be deleted.

Create a scenario	35
Rename a scenario	36
Modify a scenario	37
Delete a scenario	38
Organize scenarios list	39

• Create a scenario

In the Groups menu, select the group that will contain the new scenario and select New scenario at the end of the scenarios list. Name the new scenario, select its associated equipment and set its action.

One or several items of equipment can be selected in the new scenario by clicking on several checkboxes in the equipment list, one after the other. After each equipment selection, set the associated action by placing the equipment in the desired position.



> The scenario details list is displayed when saving the new scenario by clicking on OK (scenario name, details of action, associated equipment).

SUMMARY

WELCOME PAGE 2

1. SAFETY 3

2. NINA IO REMOTE CONTROL 5

3. USE NINA IO 13

Control an item of equipment 13

My function 15

Natural Control function 19

Load a scenario 22

Alarm function 23

4. CUSTOMIZE NINA IO 25

Customize equipment 25

Customize groups 29

Customize scenarios 35

Customize remote control 40

5. ADVANCED SETTINGS 46

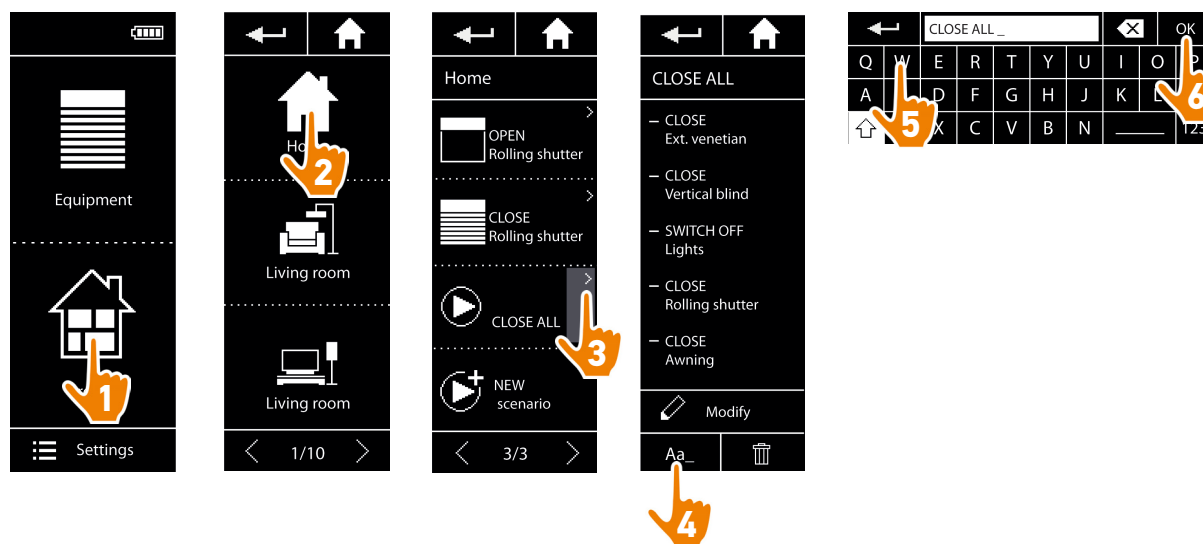
6. TROUBLESHOOTING 57

7. ABOUT NINA IO 58

Create a scenario	35
Rename a scenario	36
Modify a scenario	37
Delete a scenario	38
Organize scenarios list	39

• Rename a scenario

In the Groups menu, select the group containing the corresponding scenario, select the scenario and rename it using the keyboard:



 This function is not allowed with predefined scenarios. Only scenarios created by the user can be renamed.

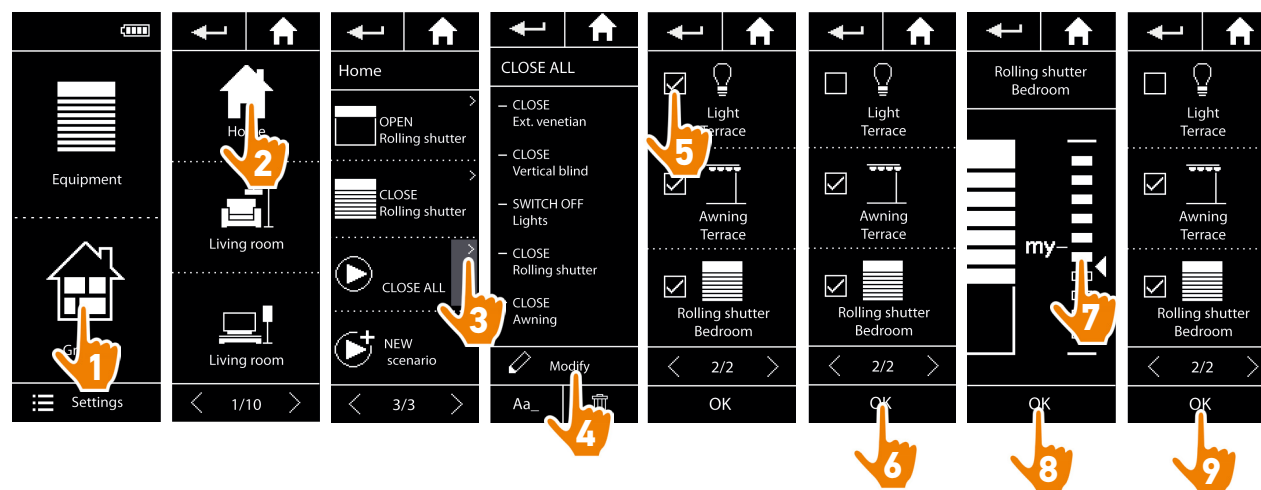
SUMMARY

WELCOME PAGE	2
1. SAFETY	3
2. NINA IO REMOTE CONTROL	5
3. USE NINA IO	13
Control an item of equipment	13
My function	15
Natural Control function	19
Load a scenario	22
Alarm function	23
4. CUSTOMIZE NINA IO	25
Customize equipment	25
Customize groups	29
Customize scenarios	35
Customize remote control	40
5. ADVANCED SETTINGS	46
6. TROUBLESHOOTING	57
7. ABOUT NINA IO	58

Create a scenario	35
Rename a scenario	36
Modify a scenario	37
Delete a scenario	38
Organize scenarios list	39

- **Modify a scenario**

In the Groups menu, select the group containing the corresponding scenario and select the scenario to modify it: add or delete associated items of equipment by selecting checkboxes. Change the setting level of the items of equipment if necessary.



> The light terrace is removed from the CLOSE ALL scenario.

> The new position of the rolling shutter bedroom in the CLOSE ALL scenario is saved.

i This function is not allowed with predefined scenarios. Only scenarios created by the user can be modified.

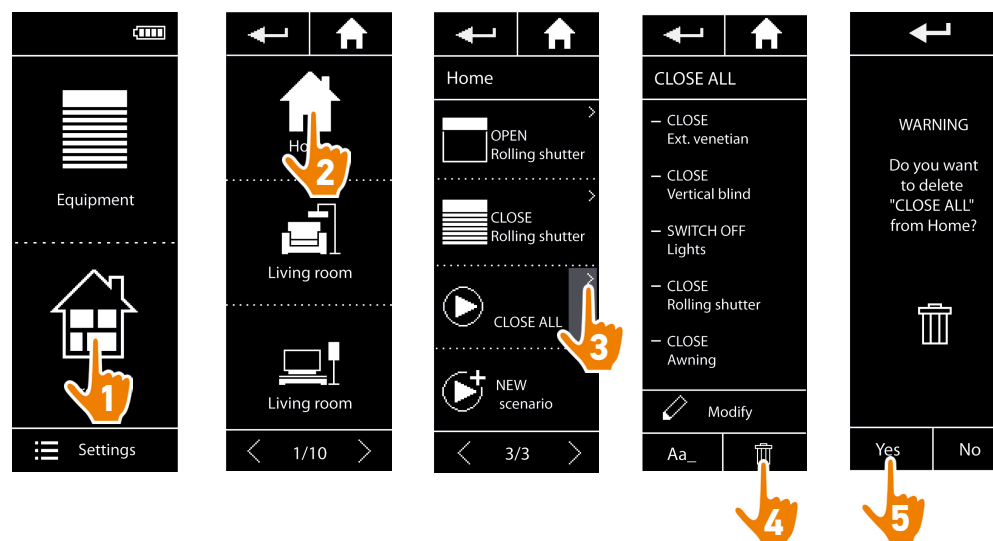
SUMMARY

WELCOME PAGE	2
1. SAFETY	3
2. NINA IO REMOTE CONTROL	5
3. USE NINA IO	13
Control an item of equipment	13
My function	15
Natural Control function	19
Load a scenario	22
Alarm function	23
4. CUSTOMIZE NINA IO	25
Customize equipment	25
Customize groups	29
Customize scenarios	35
Customize remote control	40
5. ADVANCED SETTINGS	46
6. TROUBLESHOOTING	57
7. ABOUT NINA IO	58

Create a scenario	35
Rename a scenario	36
Modify a scenario	37
Delete a scenario	38
Organize scenarios list	39

- Delete a scenario

In the Groups menu, select the group containing the corresponding scenario, select the scenario and delete it:



> The entire CLOSE ALL scenario is deleted, with all equipment and the associated actions.

 To delete only one item of equipment in a scenario, refer to [Modify a scenario, page 37](#).

SUMMARY

WELCOME PAGE 2

1. SAFETY 3

2. NINA IO REMOTE CONTROL 5

3. USE NINA IO 13

Control an item of equipment 13

My function 15

Natural Control function 19

Load a scenario 22

Alarm function 23

4. CUSTOMIZE NINA IO 25

Customize equipment 25

Customize groups 29

Customize scenarios 35

Customize remote control 40

5. ADVANCED SETTINGS 46

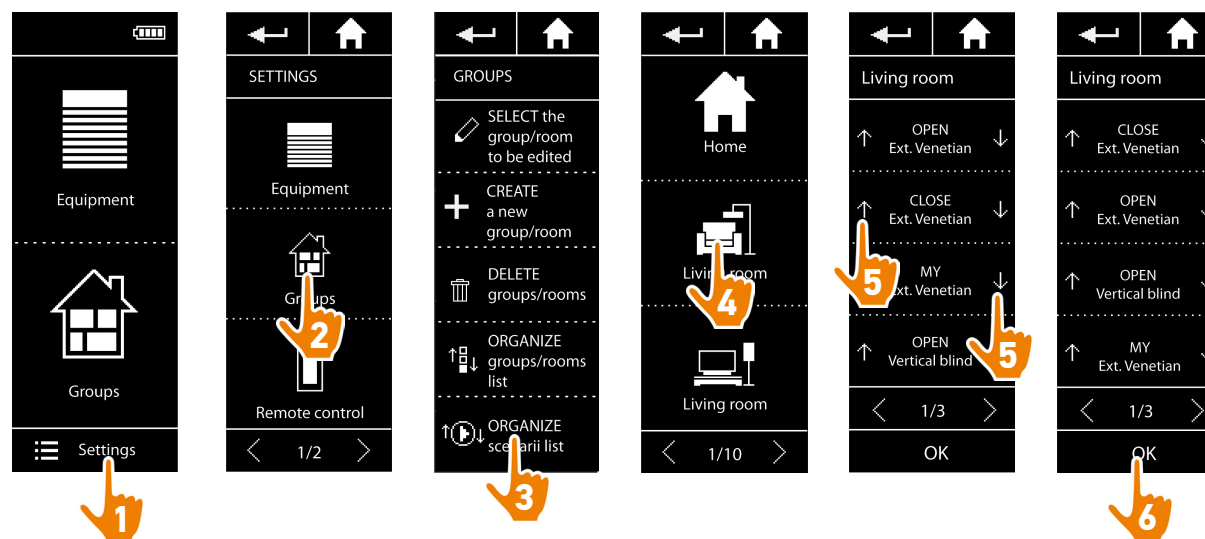
6. TROUBLESHOOTING 57

7. ABOUT NINA IO 58

Create a scenario	35
Rename a scenario	36
Modify a scenario	37
Delete a scenario	38
Organize scenarios list	39

- Organize scenarios list

In the Settings menu, select the Groups, select Organize scenarii list. Select the group in which scenarii will be reorganized and use the up/down arrows to change their position in the list:



SUMMARY

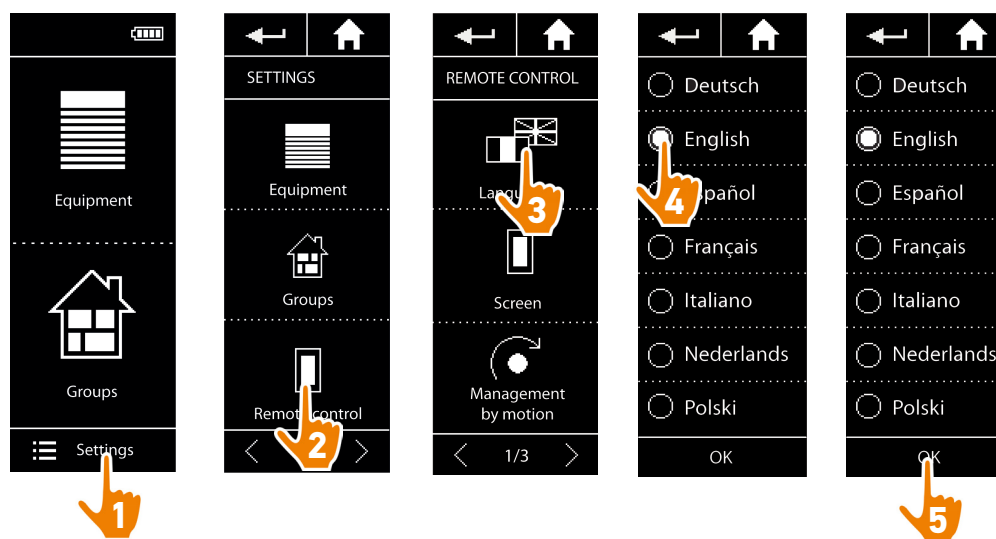
WELCOME PAGE	2
1. SAFETY	3
2. NINA IO REMOTE CONTROL	5
3. USE NINA IO	13
Control an item of equipment	13
My function	15
Natural Control function	19
Load a scenario	22
Alarm function	23
4. CUSTOMIZE NINA IO	25
Customize equipment	25
Customize groups	29
Customize scenarios	35
Customize remote control	40
5. ADVANCED SETTINGS	46
6. TROUBLESHOOTING	57
7. ABOUT NINA IO	58

Customize remote control

Change languages	40
Change screen intensity	41
Manage standby mode	42
Manage state of screen when Nina io on base	43
Manage sounds	44
Use reset function	45

• Change languages

In the Settings menu, select the remote control to access the languages and choose the corresponding language:



 There are 7 languages available.

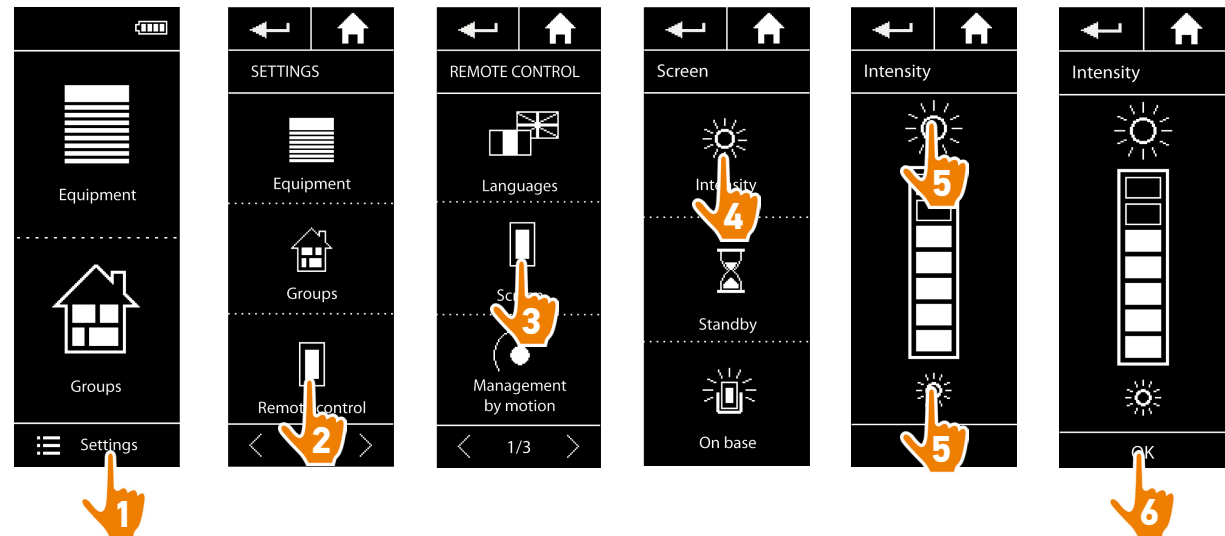
SUMMARY

WELCOME PAGE	2
1. SAFETY	3
2. NINA IO REMOTE CONTROL	5
3. USE NINA IO	13
Control an item of equipment	13
My function	15
Natural Control function	19
Load a scenario	22
Alarm function	23
4. CUSTOMIZE NINA IO	25
Customize equipment	25
Customize groups	29
Customize scenarios	35
Customize remote control	40
5. ADVANCED SETTINGS	46
6. TROUBLESHOOTING	57
7. ABOUT NINA IO	58

Change languages	40
Change screen intensity	41
Manage standby mode	42
Manage state of screen when Nina io on base	43
Manage sounds	44
Use reset function	45

- **Change screen intensity**

In the Settings menu, select the remote control to access the screen settings. Select the Intensity icon and set it as necessary:



i To increase the intensity of the screen, click on .
To decrease the intensity of the screen, click on .

i When Nina io is in low battery, the intensity of backlight is reduced at 30%.

SUMMARY

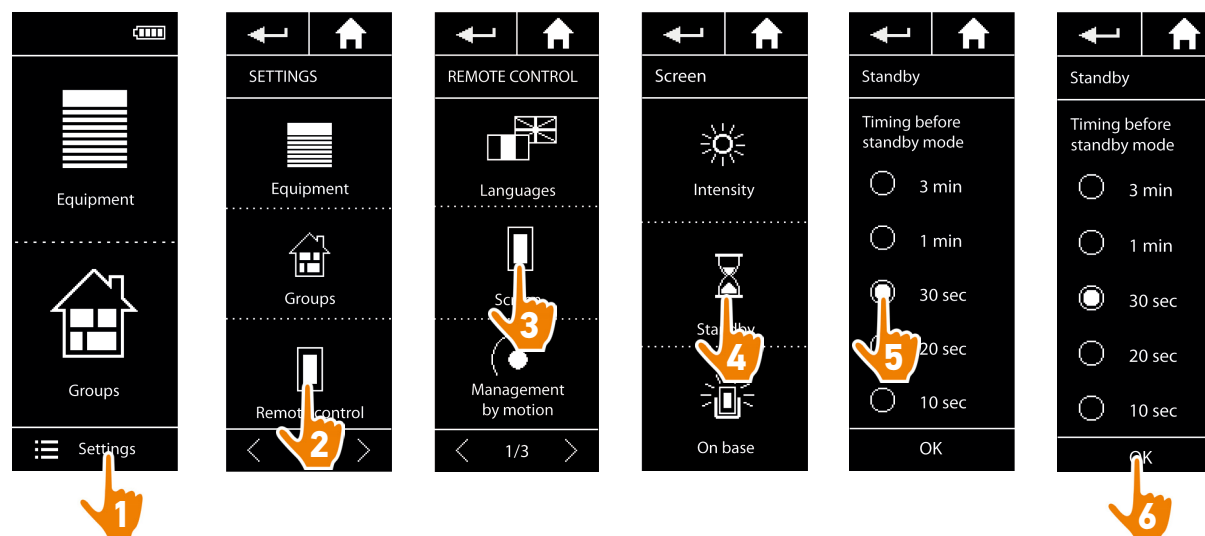
WELCOME PAGE	2
1. SAFETY	3
2. NINA IO REMOTE CONTROL	5
3. USE NINA IO	13
Control an item of equipment	13
My function	15
Natural Control function	19
Load a scenario	22
Alarm function	23
4. CUSTOMIZE NINA IO	25
Customize equipment	25
Customize groups	29
Customize scenarios	35
Customize remote control	40
5. ADVANCED SETTINGS	46
6. TROUBLESHOOTING	57
7. ABOUT NINA IO	58

Change languages	40
Change screen intensity	41
Manage standby mode	42
Manage state of screen when Nina io on base	43
Manage sounds	44
Use reset function	45

- **Manage standby mode**

The time of inactivity before Nina io switches in standby mode can be set.

In the Settings menu, select the remote control to access the screen settings. Select the Standby icon and set the timing as necessary:



i The standby mode allows to save battery life. The intensity of backlight is reduced by 50% at the half remaining time before the standby mode.

SUMMARY

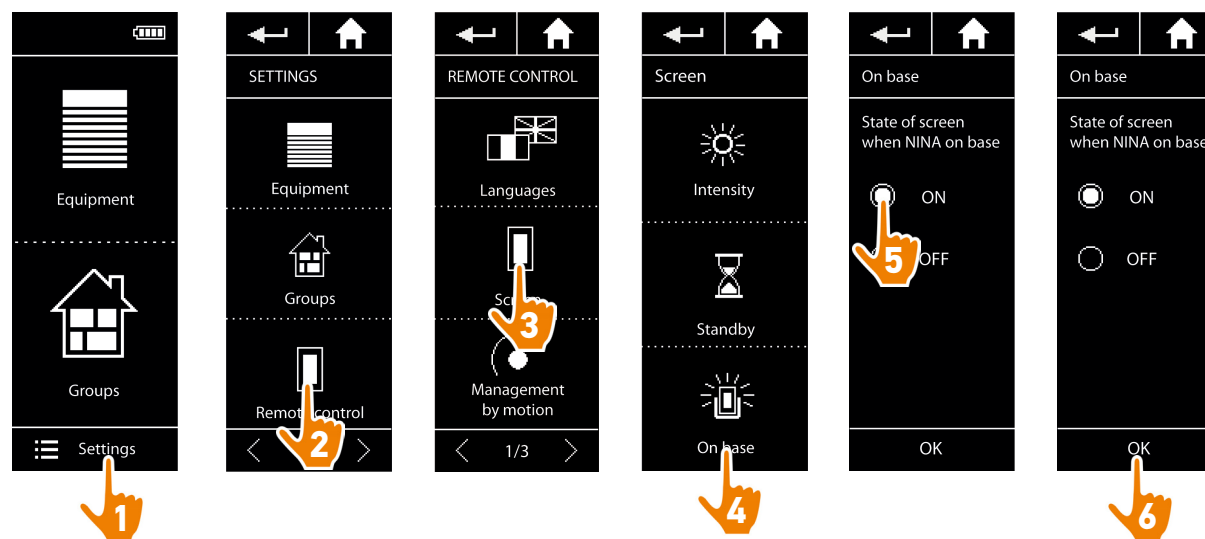
WELCOME PAGE	2
1. SAFETY	3
2. NINA IO REMOTE CONTROL	5
3. USE NINA IO	13
Control an item of equipment	13
My function	15
Natural Control function	19
Load a scenario	22
Alarm function	23
4. CUSTOMIZE NINA IO	25
Customize equipment	25
Customize groups	29
Customize scenarios	35
Customize remote control	40
5. ADVANCED SETTINGS	46
6. TROUBLESHOOTING	57
7. ABOUT NINA IO	58

Change languages	40
Change screen intensity	41
Manage standby mode	42
Manage state of screen when Nina io on base	43
Manage sounds	44
Use reset function	45

- **Manage state of screen when Nina io on base**

When Nina io is on base, it is possible to keep its screen On or Off.

In the Settings menu, select the remote control to access the screen settings. Select the On base icon and set the screen on ON or OFF:



i By default, the screen remains On when Nina io is on base.

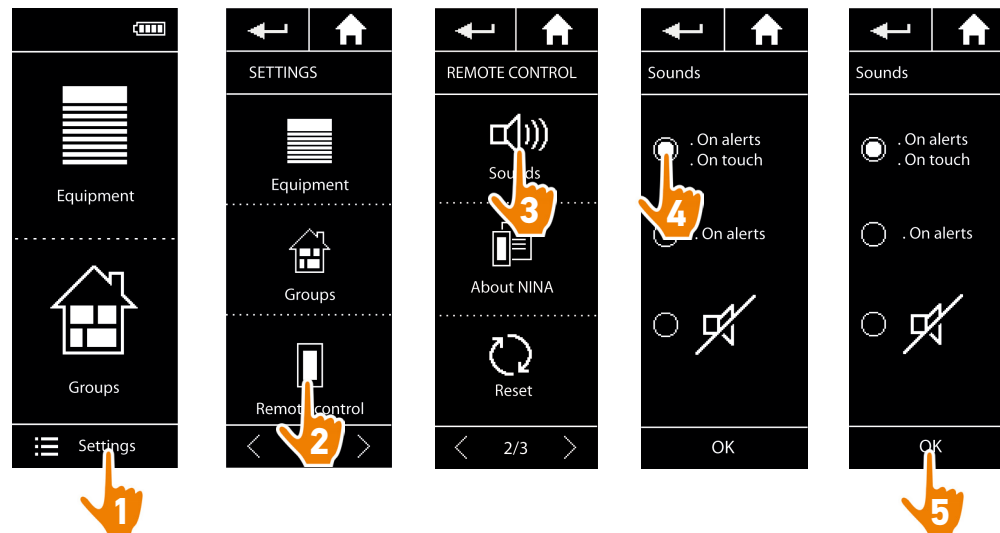
SUMMARY

WELCOME PAGE	2
1. SAFETY	3
2. NINA IO REMOTE CONTROL	5
3. USE NINA IO	13
Control an item of equipment	13
My function	15
Natural Control function	19
Load a scenario	22
Alarm function	23
4. CUSTOMIZE NINA IO	25
Customize equipment	25
Customize groups	29
Customize scenarios	35
Customize remote control	40
5. ADVANCED SETTINGS	46
6. TROUBLESHOOTING	57
7. ABOUT NINA IO	58

Change languages	40
Change screen intensity	41
Manage standby mode	42
Manage state of screen when Nina io on base	43
Manage sounds	44
Use reset function	45

- **Manage sounds**

In the Settings menu, select the remote control to access the sounds settings and set the sounds of Nina io as necessary:



i There are three adjustment options: no sound, only alerts sounds, alerts sounds and keyboard clicks.

SUMMARY

WELCOME PAGE	2
1. SAFETY	3
2. NINA IO REMOTE CONTROL	5
3. USE NINA IO	13
Control an item of equipment	13
My function	15
Natural Control function	19
Load a scenario	22
Alarm function	23
4. CUSTOMIZE NINA IO	25
Customize equipment	25
Customize groups	29
Customize scenarios	35
Customize remote control	40
5. ADVANCED SETTINGS	46
6. TROUBLESHOOTING	57
7. ABOUT NINA IO	58

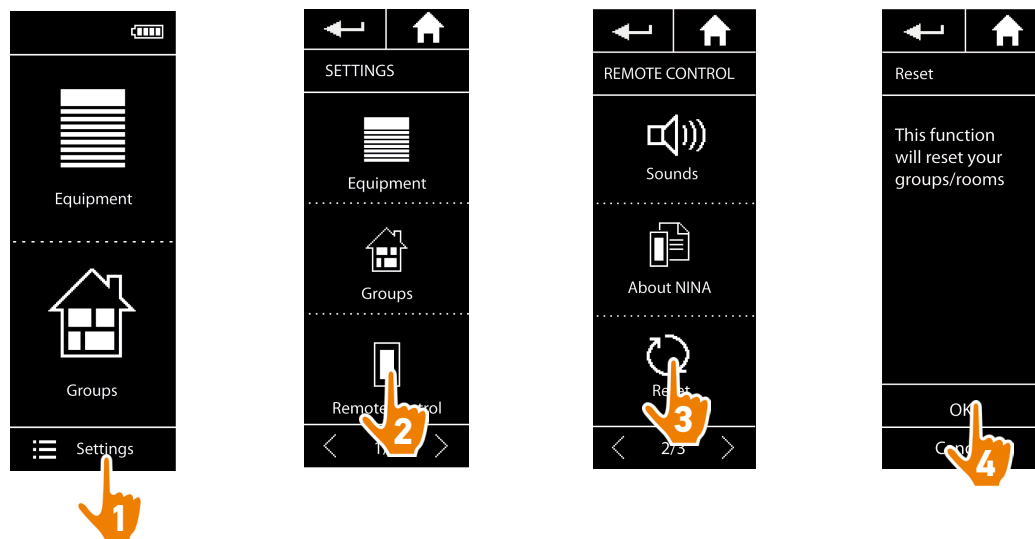
Change languages	40
Change screen intensity	41
Manage standby mode	42
Manage state of screen when Nina io on base	43
Manage sounds	44
Use reset function	45

- Use reset function

It is possible to reset Nina io, that is to delete all the groups and scenarios in the same time.

The reset function does not delete the items of equipment that are retained in the Equipment menu and that always can be controlled. The parameters of the Remote control menu are also retained.

In the Settings menu, select the remote control to access the Reset function and reset all the groups/rooms:



 To recreate groups and scenarios, refer to [Create a new group, page 32](#) and [Create a scenario, page 35](#).

SUMMARY

WELCOME PAGE	2
1. SAFETY	3
2. NINA IO REMOTE CONTROL	5
3. USE NINA IO	13
Control an item of equipment	13
My function	15
Natural Control function	19
Load a scenario	22
Alarm function	23
4. CUSTOMIZE NINA IO	25
Customize equipment	25
Customize groups	29
Customize scenarios	35
Customize remote control	40
5. ADVANCED SETTINGS	46
6. TROUBLESHOOTING	57
7. ABOUT NINA IO	58

5. ADVANCED SETTINGS



The following functions are only for a professional motorisation and home automation installer. Any change may cause a modification of the installation

First installation of Nina io	47
Upgrade of an installation already equipped with Nina io	51



SUMMARY

WELCOME PAGE	2
1. SAFETY	3
2. NINA IO REMOTE CONTROL	5
3. USE NINA IO	13
Control an item of equipment	13
My function	15
Natural Control function	19
Load a scenario	22
Alarm function	23
4. CUSTOMIZE NINA IO	25
Customize equipment	25
Customize groups	29
Customize scenarios	35
Customize remote control	40
5. ADVANCED SETTINGS	46
6. TROUBLESHOOTING	57
7. ABOUT NINA IO	58

First installation of Nina io

The installation of Nina io remote control is guided by the product itself. From the start, Nina io displays step by step the different key stages to follow to perform the first installation:

Start Nina io	47
Pair equipment (1/2)	48
Pair equipment (2/2)	49
Place equipment into groups/rooms	50
Complete installation	51

• Start Nina io

1. Switch the button to ON at the back of the remote control to turn on Nina io.
2. Place the removable cover at the back of the remote control.
3. Wait for a few seconds the end of the welcome animation and choose a language by clicking on the corresponding box.
4. Click on START to start the pairing of equipment.
> Nina io is ready for pairing.



SUMMARY

WELCOME PAGE	2
1. SAFETY	3
2. NINA IO REMOTE CONTROL	5
3. USE NINA IO	13
Control an item of equipment	13
My function	15
Natural Control function	19
Load a scenario	22
Alarm function	23
4. CUSTOMIZE NINA IO	25
Customize equipment	25
Customize groups	29
Customize scenarios	35
Customize remote control	40
5. ADVANCED SETTINGS	46
6. TROUBLESHOOTING	57
7. ABOUT NINA IO	58

Start Nina io	47
Pair equipment (1/2)	48
Pair equipment (2/2)	49
Place equipment into groups/rooms	50
Complete installation	51

• Pair equipment (1/2)

After the starting of the Nina io remote control, pair the equipment following the stages indicated by Nina io. Only already settled equipment can be paired to Nina io.

There are 3 types of equipment:

- Equipment only associated to a individual control point (1W: without feedback)
- Equipment associated to a centralized control (2W: with feedback)
- Equipment without control point

Individual controls without feedback function can be used for control within sight of equipment in one room.

 These equipment can be identified by the following symbols:  

Centralized controls with feedback function can be used to control all equipment in the home.

Users receive constant information about whether or not a command has been correctly executed, and about any problems encountered.

 These equipment can be identified by the following symbols:  

 The pairing must start with the 2W centralized control. If there is no 2W centralized control in the installation, pair with 1W individual controls.

 The number of equipment on Nina io is limited to 60 products. A warning pop up window is displayed when the 50 and 60 items of equipment step are reached.

SUMMARY

WELCOME PAGE	2
1. SAFETY	3
2. NINA IO REMOTE CONTROL	5
3. USE NINA IO	13
Control an item of equipment	13
My function	15
Natural Control function	19
Load a scenario	22
Alarm function	23
4. CUSTOMIZE NINA IO	25
Customize equipment	25
Customize groups	29
Customize scenarios	35
Customize remote control	40
5. ADVANCED SETTINGS	46
6. TROUBLESHOOTING	57
7. ABOUT NINA IO	58

Start Nina io	47
Pair equipment (1/2)	48
Pair equipment (2/2)	49
Place equipment into groups/rooms	50
Complete installation	51

• Pair equipment (2/2)

1. Start the pairing of equipment:

- > Pre paired items of equipment are automatically detected: place them in groups/rooms.
- > If no pre paired items of equipment have been detected, the discovery of equipment is directly launched.

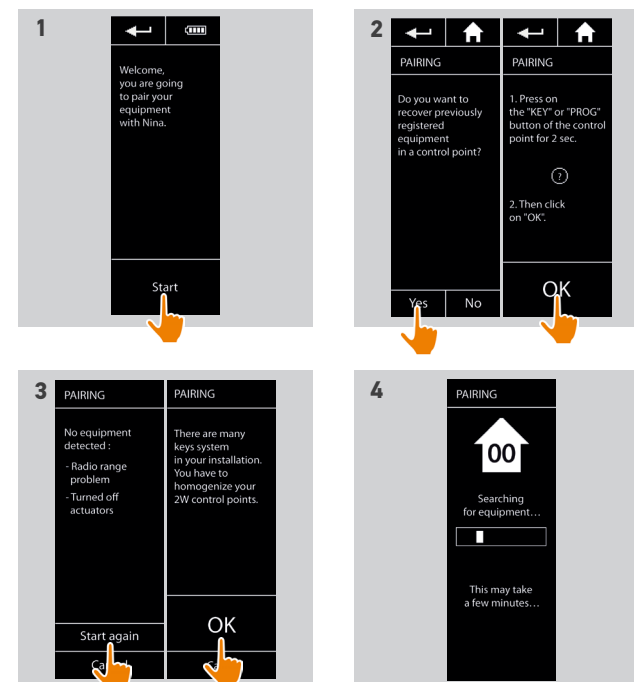
2. Discover items of equipment already registered in a control point, starting with 2W: press on KEY or PROG button of the control point for 2 seconds and then click on OK to launch the research.

i Click on No to directly search items of equipment without control point.

3. If no equipment is detected, start again the research and homogenize the 2W control points if there are too many keys system in the installation.

4. When items of equipment are detected, place them into groups.

i Refer to [Place equipment into groups/rooms, page 50](#)




SUMMARY

WELCOME PAGE	2
1. SAFETY	3
2. NINA IO REMOTE CONTROL	5
3. USE NINA IO	13
Control an item of equipment	13
My function	15
Natural Control function	19
Load a scenario	22
Alarm function	23
4. CUSTOMIZE NINA IO	25
Customize equipment	25
Customize groups	29
Customize scenarios	35
Customize remote control	40
5. ADVANCED SETTINGS	46
6. TROUBLESHOOTING	57
7. ABOUT NINA IO	58

Start Nina io	47
Pair equipment (1/2)	48
Pair equipment (2/2)	49
Place equipment into groups/rooms	50
Complete installation	51

After the pairing of the items of equipment, place them in groups/rooms, following the stages indicate by Nina io. The detected items of equipment are displayed one by one on the remote control, in order to be placed in predefined groups.

 25 predefined groups are available and 5 new groups can be created. After the installation, only the groups containing equipment are available for utilisation, in Groups menu.


- Click on **Identify** to locate the equipment in the installation: the corresponding equipment will be triggered to be easily spotted. When the equipment is located, click on **STOP** to stop its movement.
- Click on **Delete** to delete the displayed equipment.
- If required, specify the equipment profile by selecting one of the displayed options.

• Place equipment into groups/rooms

1. For every displayed equipment, click on Place the equipment in groups/rooms.


> The groups list is displayed.

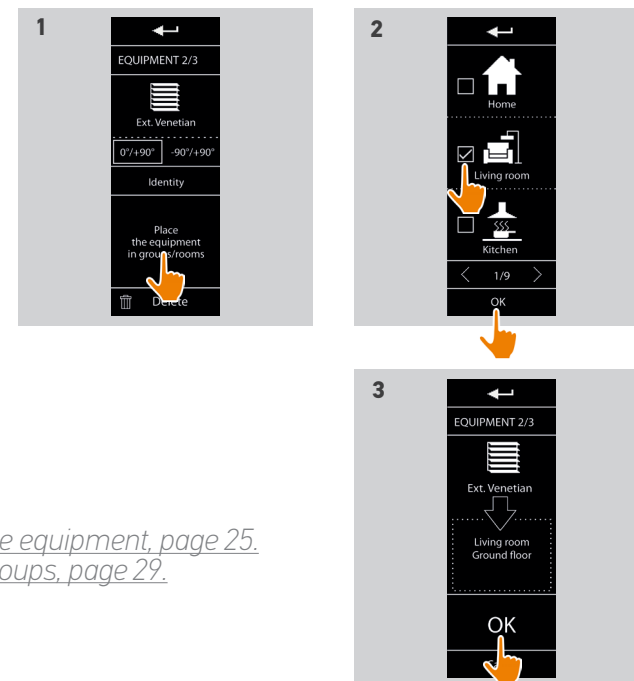
2. Select a group by checking the corresponding box then click on OK to valid.

 It is possible to select one or several groups for a same item of equipment by selecting one or more boxes.

> The group(s) associated to the equipment are listed.

3. Click on OK to save.

 To customize equipment, refer to [Customize equipment, page 25](#). To customize groups, refer to [Customize groups, page 29](#).



SUMMARY


WELCOME PAGE	2
1. SAFETY	3
2. NINA IO REMOTE CONTROL	5
3. USE NINA IO	13
Control an item of equipment	13
My function	15
Natural Control function	19
Load a scenario	22
Alarm function	23
4. CUSTOMIZE NINA IO	25
Customize equipment	25
Customize groups	29
Customize scenarios	35
Customize remote control	40
5. ADVANCED SETTINGS	46
6. TROUBLESHOOTING	57
7. ABOUT NINA IO	58

Start Nina io	47
Pair equipment (1/2)	48
Pair equipment (2/2)	49
Place equipment into groups/rooms	50
Complete installation	51

After recovering the equipment, exit the Installer menu to access the Using menu.

- **Complete installation**

1. Click on No to exit the installation menu.

 Click on Yes to return to the pairing page.

2. Confirm this choice by clicking on Yes.

> The number of equipment associated to Nina io is displayed.

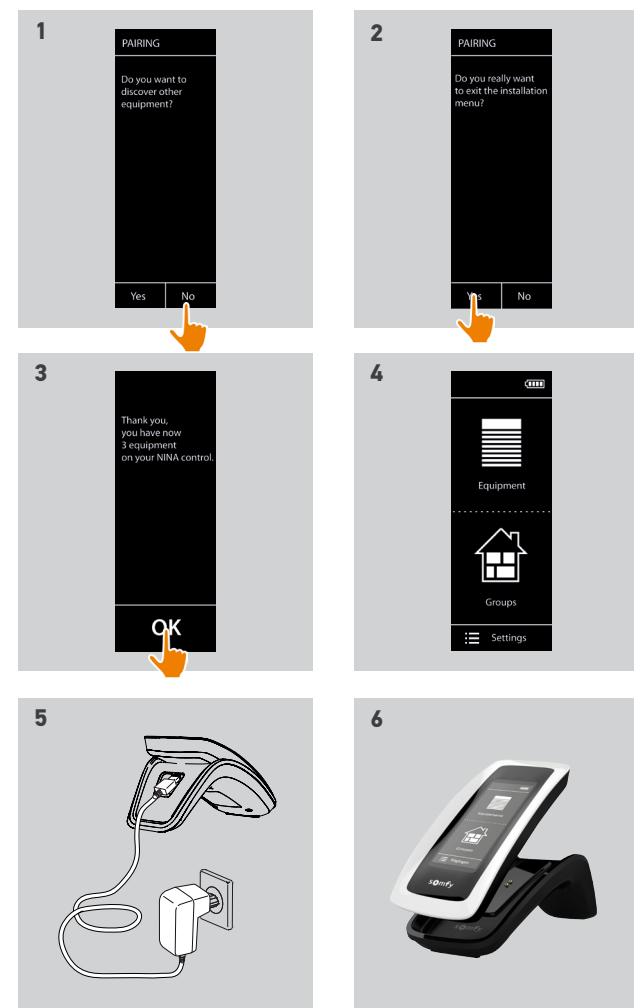
 Click on No to return to the pairing page.

3. Click on OK to access the home screen.

4. From the home screen, access all the user and installer functions by clicking on the 3 main menus: Equipment, Groups and Settings.

5. Plug the base into an electrical outlet.

6. Place Nina io on the base..



SUMMARY

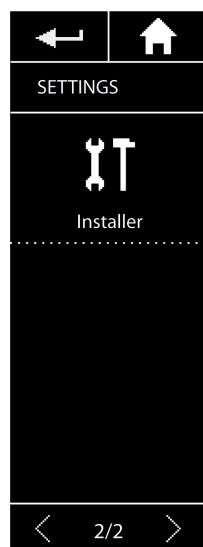
WELCOME PAGE	2
1. SAFETY	3
2. NINA IO REMOTE CONTROL	5
3. USE NINA IO	13
Control an item of equipment	13
My function	15
Natural Control function	19
Load a scenario	22
Alarm function	23
4. CUSTOMIZE NINA IO	25
Customize equipment	25
Customize groups	29
Customize scenarios	35
Customize remote control	40
5. ADVANCED SETTINGS	46
6. TROUBLESHOOTING	57
7. ABOUT NINA IO	58






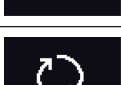
Upgrade of an installation already equipped with Nina io

The Installer functions allow a professional motorisation and home automation installer to configure an installation already equipped with Nina io, by accessing the Settings menu. Nina io guides the installer step by step and displays the different key stages to follow to upgrade the installation.

Pair equipment	53
Manage io system	54
Manage equipment	55
Reset to factory settings	56

The following functions are available to modify or personalize the installation:



Pair equipment		Pairing of new equipment in the installation Refer to <i>Pair equipment</i> , page 53
Manage io system		Transfer, generation and reception of new keys in the io system Refer to <i>Manage io system</i> , page 54
Replace equipment		Replacement of an item of equipment by a new product Refer to <i>Manage equipment</i> , page 55
Re-set equipment		Re-setting of an item of equipment Refer to <i>Manage equipment</i> , page 55
Delete equipment		Removal of one or several items of equipment Refer to <i>Manage equipment</i> , page 55
Reset to factory settings		Reset of all the installation from the beginning Refer to <i>Reset to factory settings</i> , page 56

SUMMARY

WELCOME PAGE	2
1. SAFETY	3
2. NINA IO REMOTE CONTROL	5
3. USE NINA IO	13
Control an item of equipment	13
My function	15
Natural Control function	19
Load a scenario	22
Alarm function	23
4. CUSTOMIZE NINA IO	25
Customize equipment	25
Customize groups	29
Customize scenarios	35
Customize remote control	40
5. ADVANCED SETTINGS	46
6. TROUBLESHOOTING	57
7. ABOUT NINA IO	58

Pair equipment	53
Manage io system	54
Manage equipment	55
Reset to factory settings	56

• Pair equipment



There are 3 possibilities to pair equipment:

Transfer		To transfer items of equipment to control points: <ul style="list-style-type: none">• to a remote control with feedback • to a remote control without feedback
Recover		To recover items of equipment from a control point and place them into groups/rooms Refer to Place equipment into groups/rooms, page 50
Discover		To discover all equipment with the same key or items of equipment without control point and place them into groups/rooms. Refer to Place equipment into groups/rooms, page 50

- All the equipment transferred to another control point remains saved in Nina io.
- A remote control without feedback (1W) does not indicate when the transfer is finished: to confirm that the equipment has been transferred, all the products execute a back-and-forth movement.
- The number of equipment on Nina io is limited to 60 products. A warning pop up window is displayed when the 50 and 60 equipment steps are reached.
- Only already settled equipment can be paired to Nina io.

SUMMARY

WELCOME PAGE	2
1. SAFETY	3
2. NINA IO REMOTE CONTROL	5
3. USE NINA IO	13
Control an item of equipment	13
My function	15
Natural Control function	19
Load a scenario	22
Alarm function	23
4. CUSTOMIZE NINA IO	25
Customize equipment	25
Customize groups	29
Customize scenarios	35
Customize remote control	40
5. ADVANCED SETTINGS	46
6. TROUBLESHOOTING	57
7. ABOUT NINA IO	58

Pair equipment	53
Manage io system	54
Manage equipment	55
Reset to factory settings	56

• Manage io system



There are 3 possibilities to manage the io system, by using the key button at the back of the remote control:

Send key



To transfer a new key
2 seconds press on the key button

Generate key



To generate a new key and send it to all controls with feedback
7 seconds press on the key button

Receive key



To receive a new key and transfer it to equipment of the installation
Quick press (less than 2 seconds) on the key button



The Key button of Nina io is at the back of the remote control, under the back case:



SUMMARY


WELCOME PAGE	2
1. SAFETY	3
2. NINA IO REMOTE CONTROL	5
3. USE NINA IO	13
Control an item of equipment	13
My function	15
Natural Control function	19
Load a scenario	22
Alarm function	23
4. CUSTOMIZE NINA IO	25
Customize equipment	25
Customize groups	29
Customize scenarios	35
Customize remote control	40
5. ADVANCED SETTINGS	46
6. TROUBLESHOOTING	57
7. ABOUT NINA IO	58

Pair equipment	53
Manage io system	54
Manage equipment	55
Reset to factory settings	56


• Manage equipment



Pair the new equipment and select one or several items of equipment to be replaced.

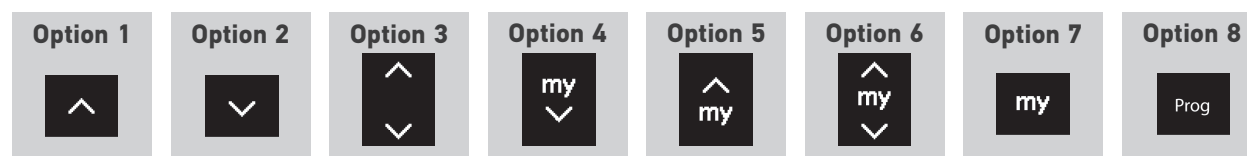
-  This function is recommended to replace one or several items of equipment out of order. Nina io discover the new equipment, give it the name of the old equipment, and place it in the groups where the old equipment was. Only similar items of equipment can be replaced.




-  This function is recommended to re-set an item of equipment (with Nina io, it is impossible to set an item of equipment without setting).

-  To re-set an equipment, the professional motorisation and home automation installer needs to know all ergonomics with 1W control point.

Select the corresponding equipment and follow the usual procedure to re-set the equipment, using the options on the screen as if it was a 1W control point.



Select the corresponding equipment and delete it.

-  One or several items of equipment can be selected to be deleted by selecting one or more boxes.

SUMMARY

WELCOME PAGE	2
1. SAFETY	3
2. NINA IO REMOTE CONTROL	5
3. USE NINA IO	13
Control an item of equipment	13
My function	15
Natural Control function	19
Load a scenario	22
Alarm function	23
4. CUSTOMIZE NINA IO	25
Customize equipment	25
Customize groups	29
Customize scenarios	35
Customize remote control	40
5. ADVANCED SETTINGS	46
6. TROUBLESHOOTING	57
7. ABOUT NINA IO	58

Pair equipment	53
Manage io system	54
Manage equipment	55
Reset to factory settings	56

- **Reset to factory settings**



Erasing all settings of the first installation: paired equipment, groups, scenarios, alarm code, etc.



To restart the installation from the beginning, refer to *First installation of Nina io, page 47*.

SUMMARY

WELCOME PAGE	2
1. SAFETY	3
2. NINA IO REMOTE CONTROL	5
3. USE NINA IO	13
Control an item of equipment	13
My function	15
Natural Control function	19
Load a scenario	22
Alarm function	23
4. CUSTOMIZE NINA IO	25
Customize equipment	25
Customize groups	29
Customize scenarios	35
Customize remote control	40
5. ADVANCED SETTINGS	46
6. TROUBLESHOOTING	57
7. ABOUT NINA IO	58

6. TROUBLESHOOTING



If the case is not correctly clipped onto the remote control, Nina io can not charge when it is on its base.

SUMMARY

WELCOME PAGE	2
1. SAFETY	3
2. NINA IO REMOTE CONTROL	5
3. USE NINA IO	13
Control an item of equipment	13
My function	15
Natural Control function	19
Load a scenario	22
Alarm function	23
4. CUSTOMIZE NINA IO	25
Customize equipment	25
Customize groups	29
Customize scenarios	35
Customize remote control	40
5. ADVANCED SETTINGS	46
6. TROUBLESHOOTING	57
7. ABOUT NINA IO	58

7. ABOUT NINA IO

Technical specifications	59
Compatibility information	60
Software version	60



SUMMARY

WELCOME PAGE	2
1. SAFETY	3
2. NINA IO REMOTE CONTROL	5
3. USE NINA IO	13
Control an item of equipment	13
My function	15
Natural Control function	19
Load a scenario	22
Alarm function	23
4. CUSTOMIZE NINA IO	25
Customize equipment	25
Customize groups	29
Customize scenarios	35
Customize remote control	40
5. ADVANCED SETTINGS	46
6. TROUBLESHOOTING	57
7. ABOUT NINA IO	58

Technical specifications

Power supply	<ul style="list-style-type: none">• 5V DC via 230 V mains adapter• European compatibility except with Great Britain
Sizes	<ul style="list-style-type: none">• Remote control: 144.7 × 60.8 × 22.4 mm• Base size: 159.8 × 68 × 54 mm• Remote control + base size: 159.8 × 68 × 69.6 mm
Finishes	<ul style="list-style-type: none">• Front face: black and white• Back face / standard shell : Black & soft touch
Product autonomy	<p>Autonomy when product not on the base:</p> <ul style="list-style-type: none">• For information only but not guaranteed: 10 days with 12 actions per day for an installation of 15 items of equipment.• An eco mode is activated when the product is at 25% of charging. The backlight decreases in order to reach the 10 days of autonomy.• A battery level indicator indicate the level of battery.
Radio frequency	868-870 MHz io-homecontrol®, two-way, tri-band
Frequency bands and maximum power used	<ul style="list-style-type: none">• 868.000 MHz - 868.600 MHz e.r.p. <25 mW• 868.700 MHz - 869.200 MHz e.r.p. <25 mW• 869.700 MHz - 870.000 MHz e.r.p. <25 mW
Functioning temperature	0 °C / + 45 °C
Storing température	- 20 °C / + 60 °C
Weights	<ul style="list-style-type: none">• Remote control (without base): 117 g with battery• Base: 205 g
Screen backlight	Guaranteed 10 000 hours at full intensity range
Battery lifetime	<ul style="list-style-type: none">• 300 cycles of charging• Warranty: 1 year in normal use• Battery available on spare part• Base available on spare part

SUMMARY

WELCOME PAGE	2
1. SAFETY	3
2. NINA IO REMOTE CONTROL	5
3. USE NINA IO	13
Control an item of equipment	13
My function	15
Natural Control function	19
Load a scenario	22
Alarm function	23
4. CUSTOMIZE NINA IO	25
Customize equipment	25
Customize groups	29
Customize scenarios	35
Customize remote control	40
5. ADVANCED SETTINGS	46
6. TROUBLESHOOTING	57
7. ABOUT NINA IO	58

Compatibility information

Nina io is compatible with all io-homecontrol® equipment, except all io-homecontrol® sensors.

Software version

Nina io version described in this manual instructions: 5125742X08



Somfy hereby declares that this product is in compliance with the requirements of Directive 2014/53/EU. The full text of the Declaration of Conformity is available at www.somfy.com/ce.

Somfy SAS

50 avenue du Nouveau Monde
F-74300 CLUSES

www.somfy.com

somfy[®]